

Beauchamp Place Streetscape Improvements

Consultation – February-March 2024



THE ROYAL BOROUGH OF
KENSINGTON
AND CHELSEA

Issues and Opportunities

Issues

- Patchy and narrow pavements.
- Overly vehicle dominated with heavy traffic and car parking dominating the street.
- Rubbish and street clutter.
- Need for adequate loading bays.
- Varying quality of shopfronts make the street feel cluttered/untidy.

Opportunities

- Planting and trees to enhance greenery on the street.
- Reducing loading bays and car parking to widen pavements and create space for pedestrians.
- Traffic calming measures.
- Providing additional bins/improving waste collection.
- Create more space for al-fresco dining.
- Upgrade lamp posts and other street furniture.
- Potential to create guidelines for signs and awnings



The Design Development Process

Beauchamp Place is an iconic street in the heart of Knightsbridge, historically known for its fashion boutiques and antique shops. The street is a B-road and therefore a key arterial route that currently experiences large volumes of traffic throughout the day. The introduction of two new pedestrian crossings at each end of the road, as well as the widening of the pavements and a reduction in loading bays, would help to address this issue, as well as improve the pedestrian flow and experience along the street. Other issues are identified on the following page. The proposed design seeks to address these issues, among other identified areas for improvement.

The proposals have been developed by a stakeholder group made up of local businesses and residents.

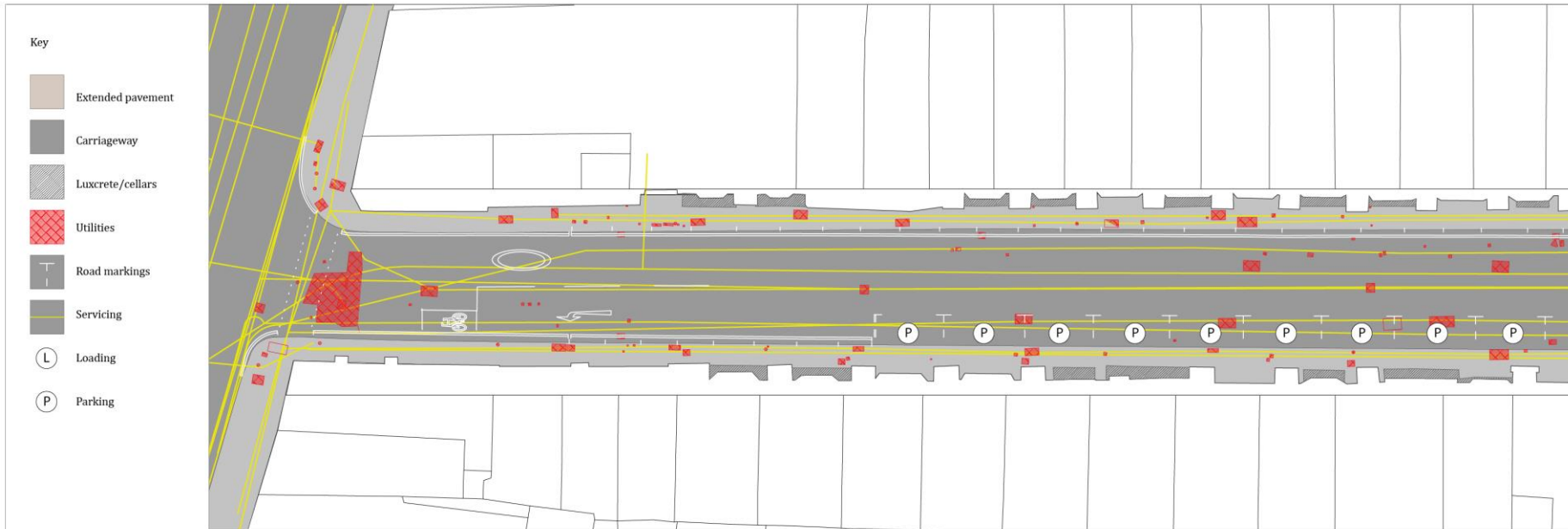
The group met with the Council three times:

- 1st Meeting (July 2023) – The stakeholder group shared their vision for the street, identifying the key issues and opportunities.
- 2nd Meeting (October 2023) – We presented three design options to the stakeholder group and gathered initial feedback and comments. The group decided on a final option which was to widen the pavement on the southern side of the street and introduce traffic calming, tree planting and new paving materials.
- 3rd Meeting (November 2023) – We presented the final option to the group who made suggestions and identified areas for refinement.

Following these meetings, the design for the streetscape shown on page 4 was developed.

Constraints

- Key vehicular route – B road linking Knightsbridge to Belgravia and beyond. Minimum road width required to maintain traffic flows.
- Adjoining TfL red route (Brompton Road) means the northern junction should remain unchanged.
- Loading bays are required for businesses along the street to function to function, therefore some will need to remain.
- Underground vaults (from basements) and utilities limit the scope for pavement changes and tree planting.



The Design

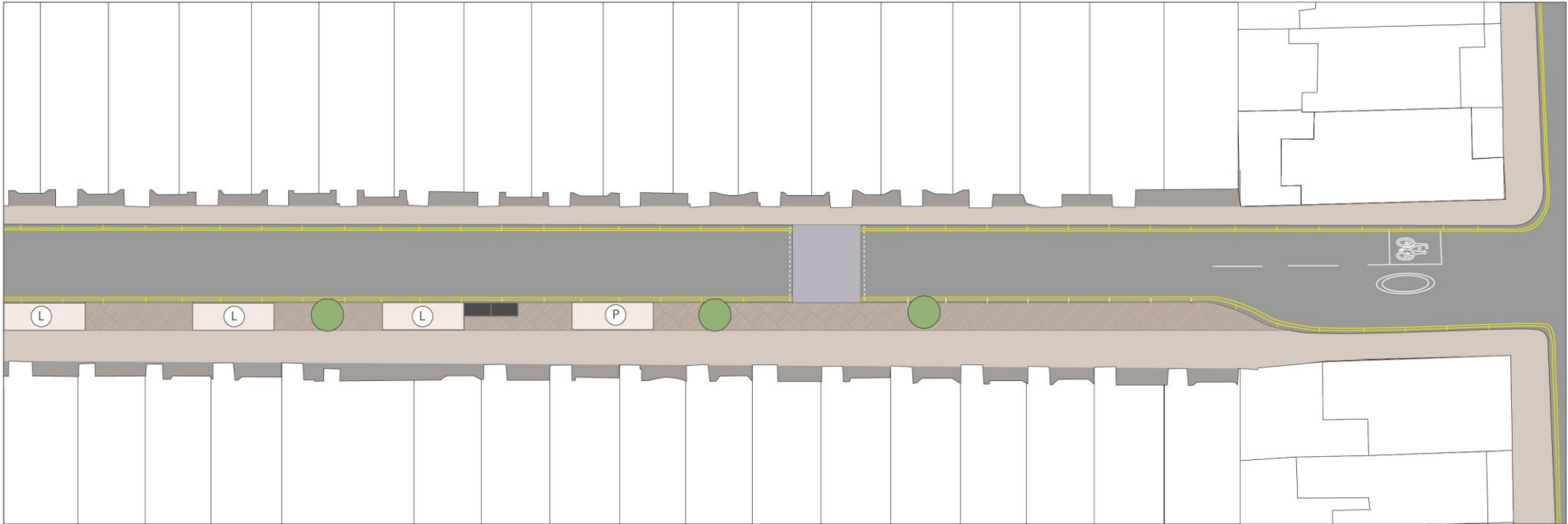
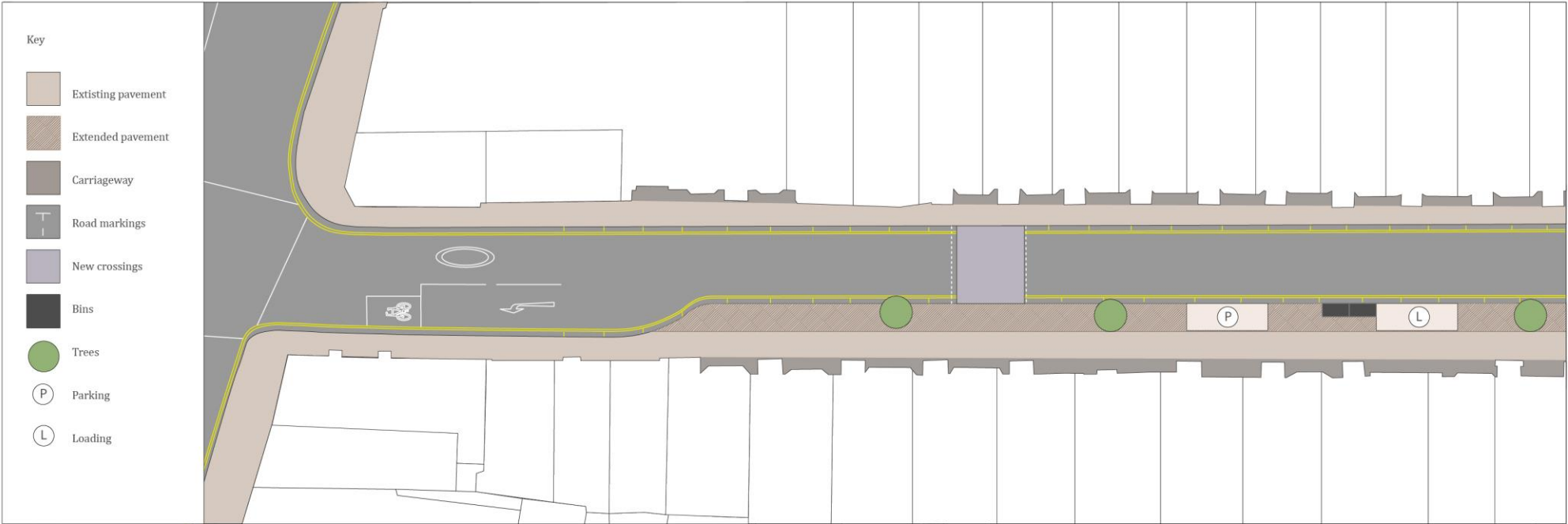
Streetscape Improvements:

- Crossings at each end
- Street trees
- Banners and lighting
- Improved carriageway
- Improved and widened pavements
- Reduced parking
- Space for al-fresco dining

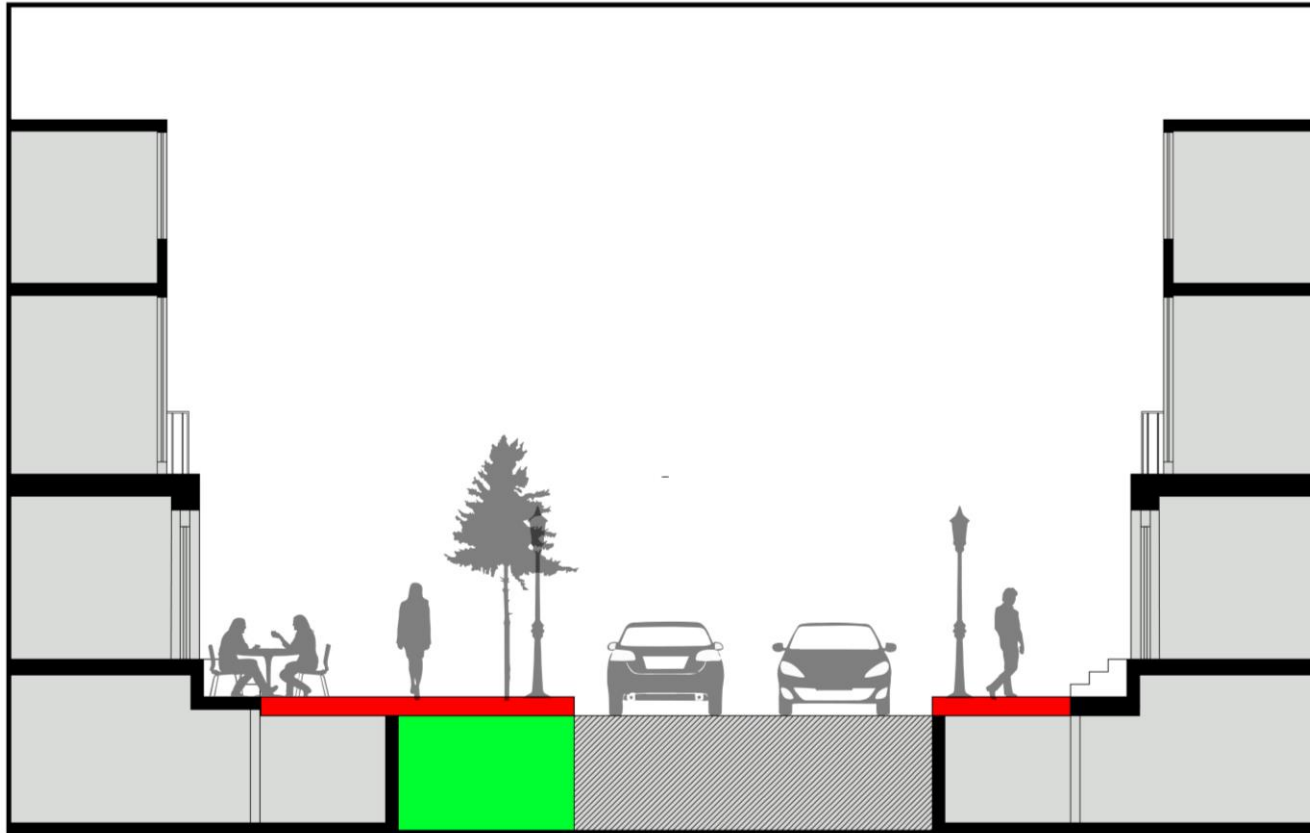


THE ROYAL BOROUGH OF
KENSINGTON
AND CHELSEA

Street Layout



Widening South–Western Pavement



- One side of the street would have a generous pavement of 4m, whilst the other would extend slightly to 2.6m.
- The wider pavement could accommodate tree and other planting, as well as space for tables and chairs.
- Loading bays could be distributed across the length of the street, giving greater flexibility to businesses.
- Concentration of food and beverage establishments on this side.



THE ROYAL BOROUGH OF
KENSINGTON
AND CHELSEA