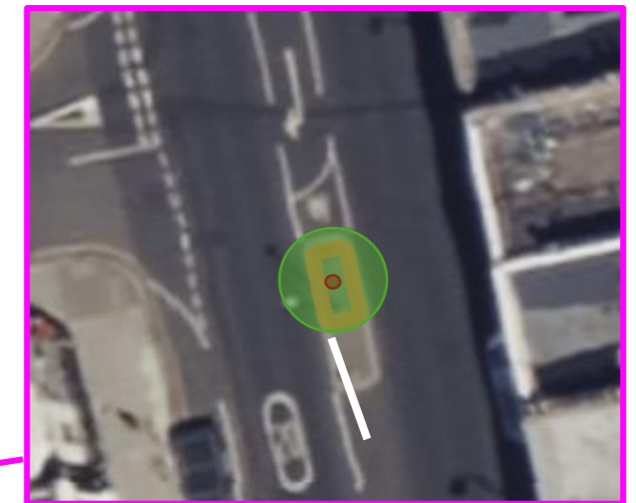


Gloucester Road – Proposed Tree Planting Consultation Plan



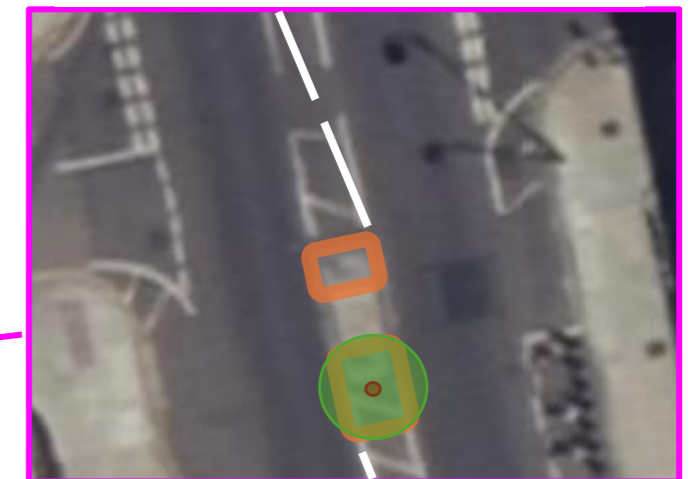
Tree pit 1 (TP1) – Replace existing island with 2.5m island and tree pit



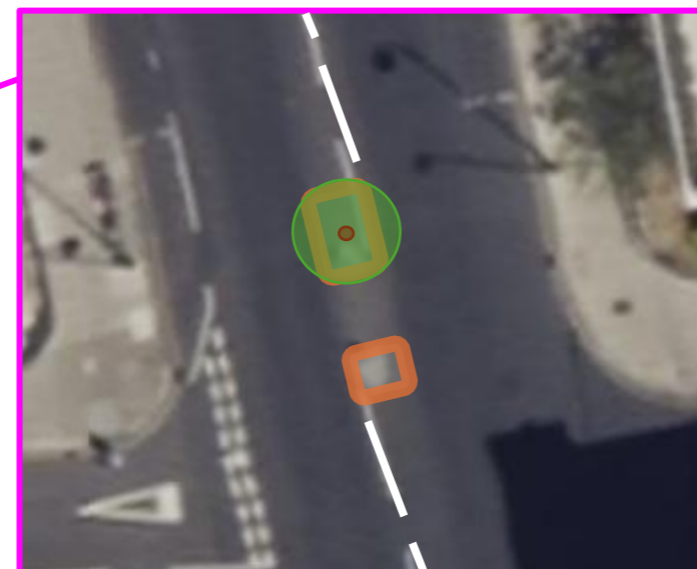
Tree pit 2 (TP2) – Replace existing island with 2.5m island and tree pit



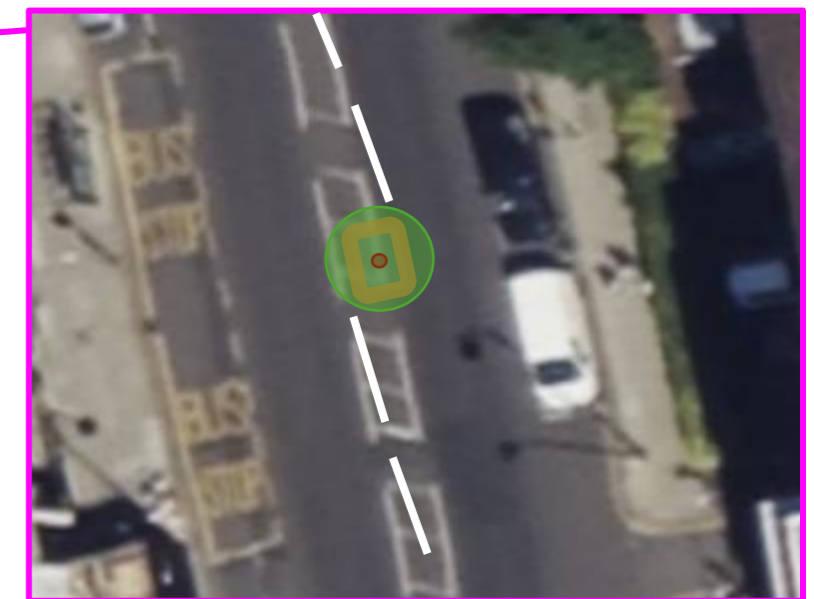
Tree pit 3 (TP3) – New 2.5m island and tree pit



Tree pit 4 (TP4) – Replace southern section of existing island with new 2.1m island and tree pit



Tree pit 6 (TP6) – Replace northern section of existing island with 2.1m island and tree pit.



Tree pit 5 (TP5) – New 1.65m wide by 2.5m long island with tree pit, offset to provide two 4.0m traffic lanes.