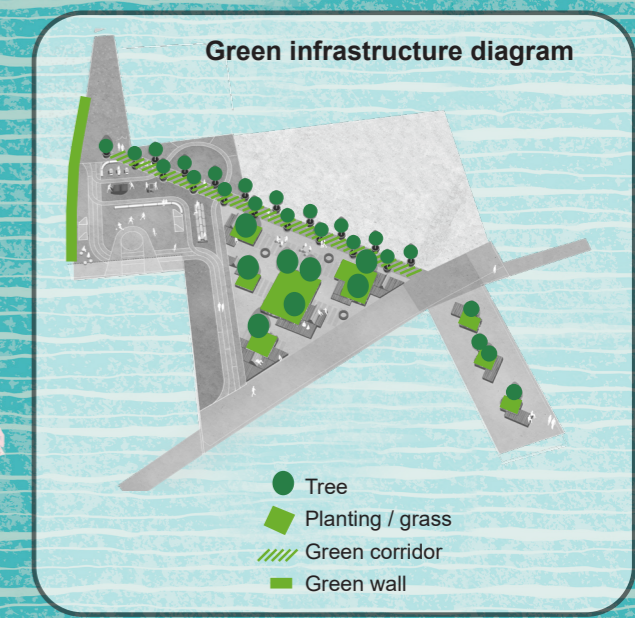
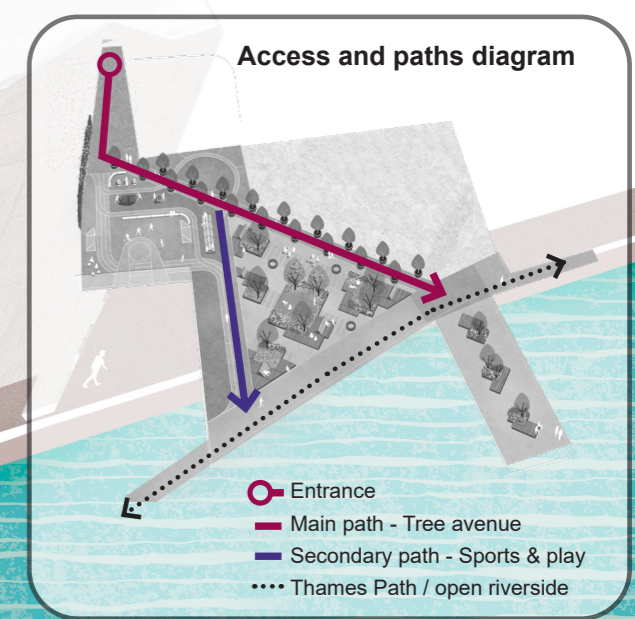
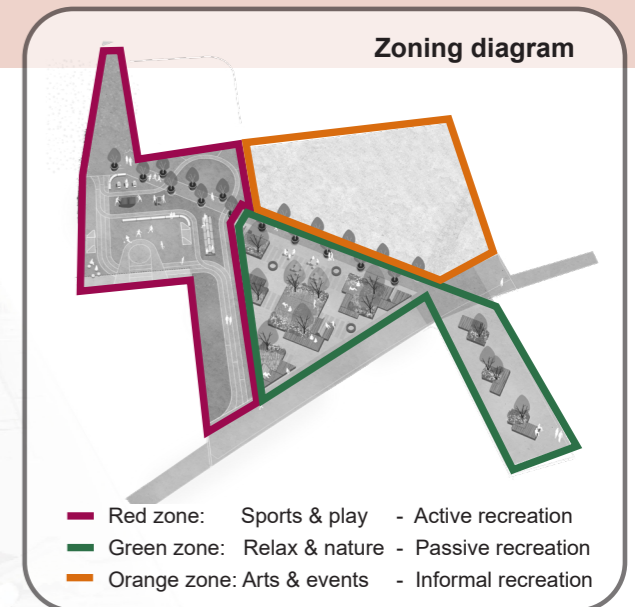
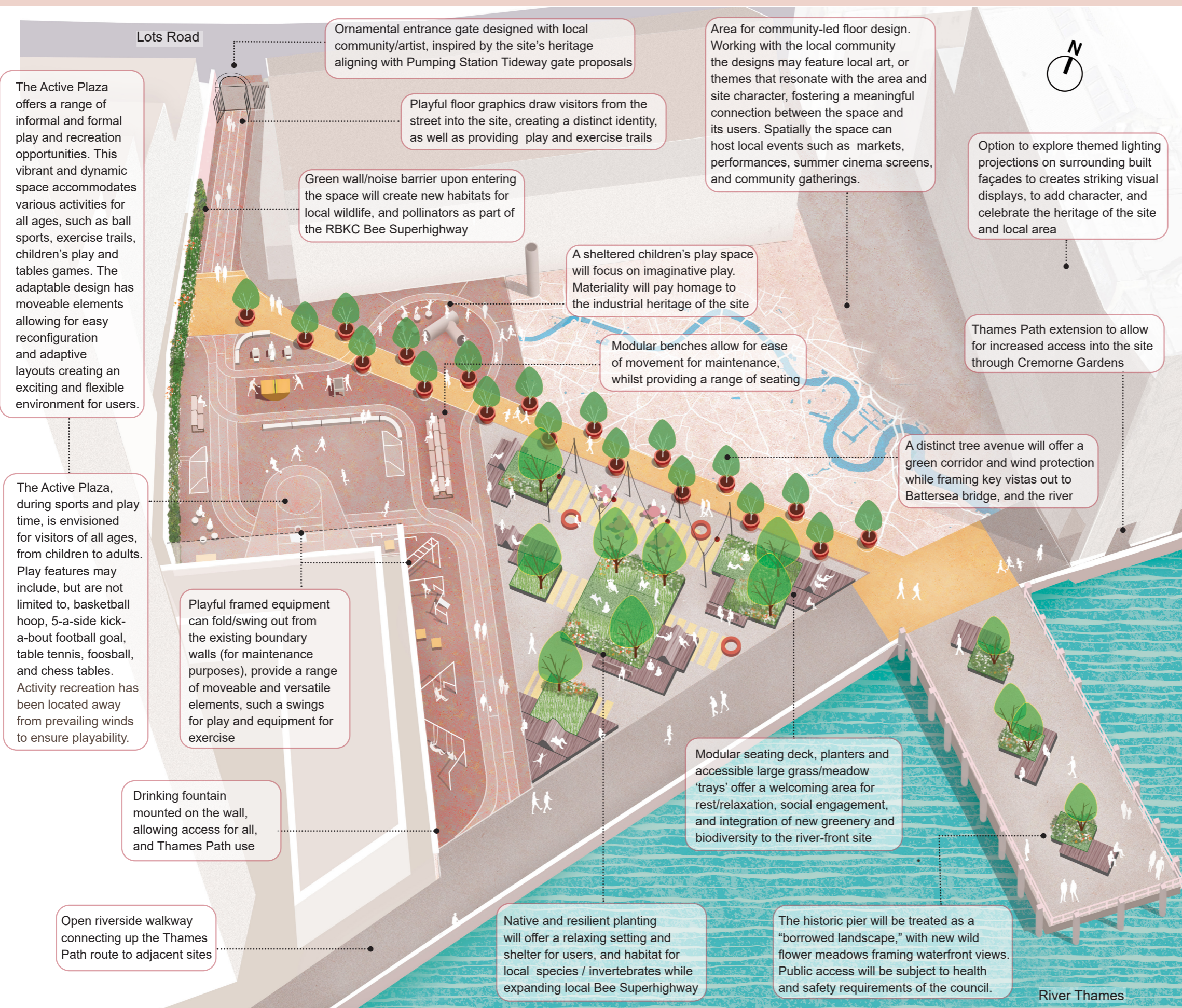


# Design 3 - Lots Road Open Space





# Design 3 - Lots Road Open Space



Active play features (e.g. table tennis) offer all ages play and exercise opportunities



Modular 'bleacher' seating and tables offer versatile configurations for use



Piping serves as both a playful and sculptural element, reflecting the industrial character of the site



Colourful circular seating allows for groups and social seating



Light up stools offer flexible seating and early evening interest



Colourful picnic tables allow for flexibility (and ease of moveability for maintenance)



Community gatherings and events, such as markets, could utilise the east of the space



Events such as seasonal outdoor cinema could offer a local community resource



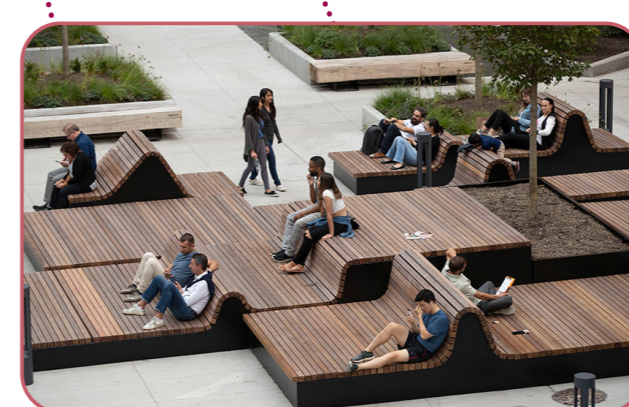
Bespoke metal framed play / exercise features (such as swings) will utilise the site boundary wall and recognise the site's industrial heritage



Modular planters allow for new habitat and planting to provide connection to nature and health and well-being benefits.



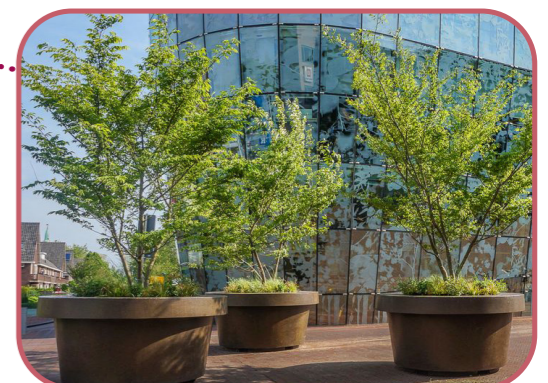
Seasonal seating provides flexible use, and will facilitate/accommodate local event days



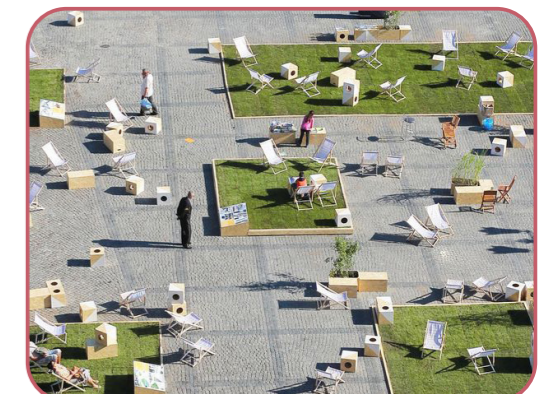
A range of interconnected benches, offers scope for group and individual seating, as well as opportunities to recline, sit, relax, socialise and access waterfront views



Themed lighting projected on surrounding blank façades provide visual statement and interest, celebrating the area rich heritage



Tree planters along the avenue provide seasonal colour, shade and greenery



Modular grass / meadow 'trays' allow for community use, much needed low maintenance greenery and wildlife connectivity within the site

