

Notting Dale Future Neighbourhoods 2030

Engagement Report

SUPPORTED BY
MAYOR OF LONDON



THE ROYAL BOROUGH OF
KENSINGTON
AND CHELSEA

Introduction

The Future Neighbourhoods (FN) 2030 programme aims to transform Notting Dale into a model eco neighbourhood, which is greener, fairer and climate resilient for all, by 2030. Working with residents, local community organisations, residents' associations, and a wide range of partners, we're collaborating to deliver 42+ environmental initiatives as part of Phase 1 and Phase 2 of the programme that will bring benefits to the community in Notting Dale through: improved air quality, more energy efficient home, lower carbon emissions, improved access to nature and more green spaces and new green jobs.

Community Engagement: Co-designing the projects and the community-led environmental strategy with residents is at the core of this programme. As part of the consultation and engagement process, different methodologies and a three-fold approach were used to gather input from the local community.

- 1. Survey:** +200 respondents participated in a survey involving residents, workers, young people and volunteers in Notting Dale. The responses are being instrumental in creating a ward-wide community-led environmental strategy and action plan, helping to identify environmental improvements and aligning future funding priorities (e.g. the Phase 3 Mayor of London' FN2030 funding) with the needs of the community.
- 2. Community Roadshows:** Four community roadshows at different locations across Notting Dale were organised to encourage diverse and inclusive participation. These interactive events facilitated direct discussions with more than 200 residents. 135 people were registered. The feedback and ideas collected will inform the strategy and environmental priorities for Phase 3 round of funding.
- 3. Stakeholder Workshop:** This event brought together Council officers, representatives from local community organisations and voluntary sector, residents associations and ward councillors. The aim was to understand opportunities, challenges and methods for creating a greener and fairer eco-neighbourhood. The input collected will help shape the strategy and the future funding priorities.


This report contains an analysis of the results and responses received during the survey, community roadshows and stakeholder workshop. The findings will help the Council shape the long-term environmental strategy and action plan, the approach to delivering the Notting Dale Future Neighbourhoods 2030 programme and establish the best ways to work with residents and local stakeholders.



Chapter 1

‘Notting Dale Future Neighbourhoods 2030 – Strategy and Phase 3 priorities’ survey Survey Report

Notting Dale Future Neighbourhoods 2030 Survey



Please complete this survey. It

Environmental issues

What environmental issues do you think have impacted your neighbourhood the most?

This will help us understand the environmental changes that need to happen in Notting Dale to create an eco-neighbourhood and inform future funding priorities

Please rank the options below (1 = issue that has impacted your neighbourhood the most and 6 = issue that has impacted your neighbourhood the least):

- Climate change
- Air quality
- Biodiversity
- Fuel Poverty
- Waste
- Other

If you selected 'Other' please specify below:

Climate change
Long term shifts in temperatures and more extreme weather events.

Air Quality
How polluted the air we breathe is. Poor air quality can harm your health and can be an issue indoors and outdoors.

Biodiversity
The variety of all life on Earth such as animals, plants, fungi and micro-organisms.

Fuel poverty
The condition when a household can't afford to heat or cool their home to an adequate temperature.

Waste
The way we consume and manage resources.

SUPPORTED BY
MAYOR OF LONDON



THE ROYAL BOROUGH OF
**KENSINGTON
AND CHELSEA**

Survey Report Introduction

The Mayor of London invited London boroughs, Business Improvement Districts and other local partnerships to contribute to a green recovery, by supporting neighbourhoods to become exemplar models of sustainability and innovation. Notting Dale is one of only two neighbourhoods in London that has been selected as part of the Future Neighbourhoods (FN) 2030.

The Council and the Mayor of London are funding work with residents to transform Notting Dale into an exemplar eco-neighbourhood that is greener, fairer, and more climate resilient for all, by 2030. The aim of the programme is to deliver a wide range of environmental projects that meet the needs of the local community and to develop a community-led environmental strategy that will help tackle environmental challenges such as poor air quality, lack of green space and biodiversity and vulnerability to climate change and flooding, while addressing health and social inequalities.

As part of Phase 1 and 2 of the FN 2030 programme, **42+** environmental initiatives are underway such as energy efficiency improvements to five primary schools, the creation of community kitchen gardens, green space improvements, cycle training and free bike repairs to name a few.

The programme focuses on five key themes which align with the Mayor of London's Future Neighbourhoods 2030 objectives and the Mayor's Green New Deal aims: Fabric First: Notting Dale Goes Net Zero / Powering Up for the People: Clean, Green and Local Energy / Creating a Cleaner and Healthier Notting Dale / Building a Notting Dale Nature Recovery Network / Creating Green Jobs and Skills Through Circular Economy.

A previous survey helped us understand the key environmental concerns for the Notting Dale community and informed priority areas for the second FN2030 round of funding, which allowed for 12 new environmental projects to be delivered this year and completed by March 2024.

In this survey we asked everyone who lives, works, studies, volunteers and/or plays/uses amenities in Notting Dale to be part in co-designing the environmental strategy and to share their views and aspirations on how to create a greener, fairer, and climate-resilient Notting Dale.

How we have used your responses

The responses from the survey 'Notting Dale FN2030 Strategy and Phase 3 priorities' play a significant role in shaping the long-term environmental strategy and action plan and understand what are the main environmental improvements that need to happen locally to benefit the community.

- One of the key outcomes of the survey was gaining insights into the environmental issues that have had the greatest impact on the neighbourhood/ward. By asking residents to rank them we have obtained a better understanding of which environmental issues must be prioritised and tackled first when building a green and resilient eco neighbourhood. This information, when compiled with the results from other engagement methods (community roadshows, stakeholder workshop and steering group meetings), will guide the strategy development and prioritisation for future funding opportunities.
- Residents' input will allow us to identify potential environmental projects and priorities for Phase 3 Mayor of London FN2030 funding and understand the longer-term environmental opportunities and solutions residents would like to see implemented in Notting Dale. The responses are driven by the experiences, aspirations and knowledge of residents, local organisations/groups and partners.
- Moreover, the survey responses will help us gain insights into the themes of the programme that resonate most with the residents of Notting Dale.

Survey Report Introduction – Continued

Methodology and report

The survey 'Notting Dale FN2030 – Strategy and Phase 3 priorities' was developed by the Council in partnership with Arup (who were commissioned to support with co-designing the environmental strategy and action plan) and the Community Steering Group members (who played a vital role in shaping the questions of this survey by reviewing and providing their perspective and suggestions).

The survey was made available to the public in both digital and hard copy formats to ensure accessibility. The Notting Dale community had multiple options for accessing the survey, including through the Consultation and Engagement Hub and paper surveys distributed across the ward at different locations, such as community centres, schools, places of worship, restaurants, leisure centres, parks, museums and institutions etc. Additionally, Residents Associations across Notting Dale, faith groups, youth centres, community champions, schools, businesses and local partners were emailed the survey and asked to share it widely within their networks and via email and social media. To reach every household in Notting Dale, 8,000+ leaflets and brochure of the programme were distributed to every household in Notting Dale, containing a QR code to access the survey. The survey was also promoted during local engagement events such as FN stakeholder workshop, community roadshows organised across Notting Dale, community events and steering group meetings.

After six weeks of consultation, the survey closed on the 25th of May 2023 and a total of 203 submissions were received.

This report compiles and outlines the key responses received throughout the different consultation and engagement methods. The findings will be further analysed as part of the strategy and action plan development to ensure a coherent holistic approach to delivering the Notting Dale FN2030 programme and establish the best ways to work with residents and local stakeholders.

Annex: Annexes 1, 2 and 3 include the data count for questions 1, 2 and 3 of the survey.

Equalities: Equalities data is presented in section two of the report 'About Respondents: Demographic Breakdown' for all respondents to the survey.


Acknowledgements: The Council would like to thank all respondents that took the time to take part in the exercise and gave their views.

Next steps: The long-term environmental strategy and action plan will be developed and published for public consultation in the autumn. A list of environmental priorities and projects will be prioritised and shortlisted following the consultation and engagement process and will be included as part of the Mayor of London's Phase 3 FN2030 round of funding. The engagement analysis will be discussed with the Community Steering Group to explore the best way to integrate them into the emergency strategy. The members of the Steering Group will be involved in shaping the approach on how the community should be involved and how the strategy will be put into practice.

**Section 1:
Notting Dale's Environmental Issues,
Opportunities for Improvements and Priorities**

Results in a Glance

Issues: What environmental issues do you think have impacted your neighbourhood the most?

 **Question:** We asked the participants to rank the environmental issues that they think impacted their neighbourhood the most.

The five environmental issues (air quality, climate change, biodiversity, fuel poverty and waste) identified align with the Council's environmental commitments adopted in the Green Plan. Free space was included for respondents to add more.

Results:

- **Air quality** emerged as the most frequently ranked concern, with 33 percent of respondents identifying it as their top priority and 32 percent identifying it as their second priority.
- **Climate change** followed with 21 percent of respondents ranking it as their first priority.
- **Fuel poverty** ranks third with 16 percent of people ranking it as their first priority.
- **Waste** was recognised as a fourth ranking issue with 15 percent of participants choosing it as a main priority.
- **Biodiversity** ranks fifth with 5 percent selecting it as their first priority and 10 percent voting for it as their second priority.

Improvements: Which environmental improvements would you like to see in Notting Dale?



Question: We asked the participants of the survey which improvements they would like to see in Notting Dale. We included a list of potential improvements but also maintained an open space for the community members to add any additional ideas they have. Participants were able to select multiple options and as many as they needed to.

Results:

The community's feedback on specific improvements in Notting Dale emphasised several key areas. Out of **203** responses:

- **Creating local green spaces** was identified by 71 percent of respondents as an improvement they would like to see in Notting Dale.
- **Reducing air pollution** was identified by 67 percent.
- **Energy efficiency and retrofitting** was identified as a priority by 66 percent of respondents.
- **Energy fuel advice** was identified by 58 percent of respondents.
- **Education, training and green jobs** were identified by 41 percent of participants.
- Other improvements highly ranked by residents are local clean and green energy (46 percent), prevent food waste (45 percent), spaces to grow (44 percent), active travel (37 percent), reduce flooding (31 percent).

Priorities: What environmental themes matters to you?



Question: We asked the participants to select the environmental themes that matter the most to them to inform Phase 3 round of Mayor of London Future Neighbourhoods 2030 funding. The themes are:

- ✓ Fabric First: Notting Dale Goes Net Zero
- ✓ Powering Up for the People: Clean, Green and Local Energy
- ✓ Creating a Cleaner and Healthier Notting Dale
- ✓ Building a Notting Dale Nature Recovery Network
- ✓ Creating Green Jobs and Skills Through Circular Economy

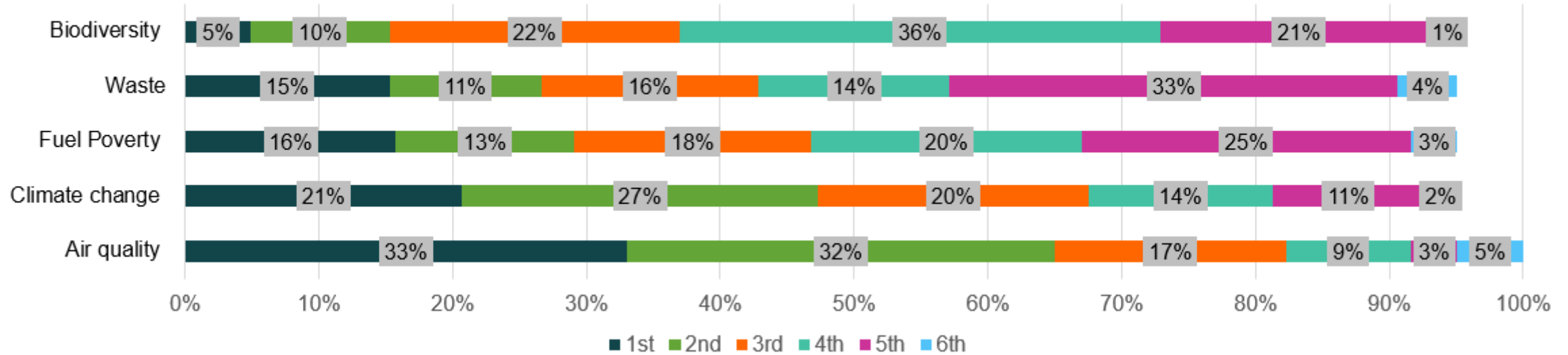
Results:

- **Creating a Cleaner and Healthier Notting Dale** received the most votes with 62 percent of respondents expressing this theme mattered to them.
- **Creating Green Jobs and Skills Through Circular Economy** closely followed with 52 percent of respondents, reflecting a strong interest in creating a local green economy.



Q1: How did Notting Dale residents rank the environmental issues impacting their neighbourhood the most?

What environmental issues do you think impacted your neighbourhood the most?

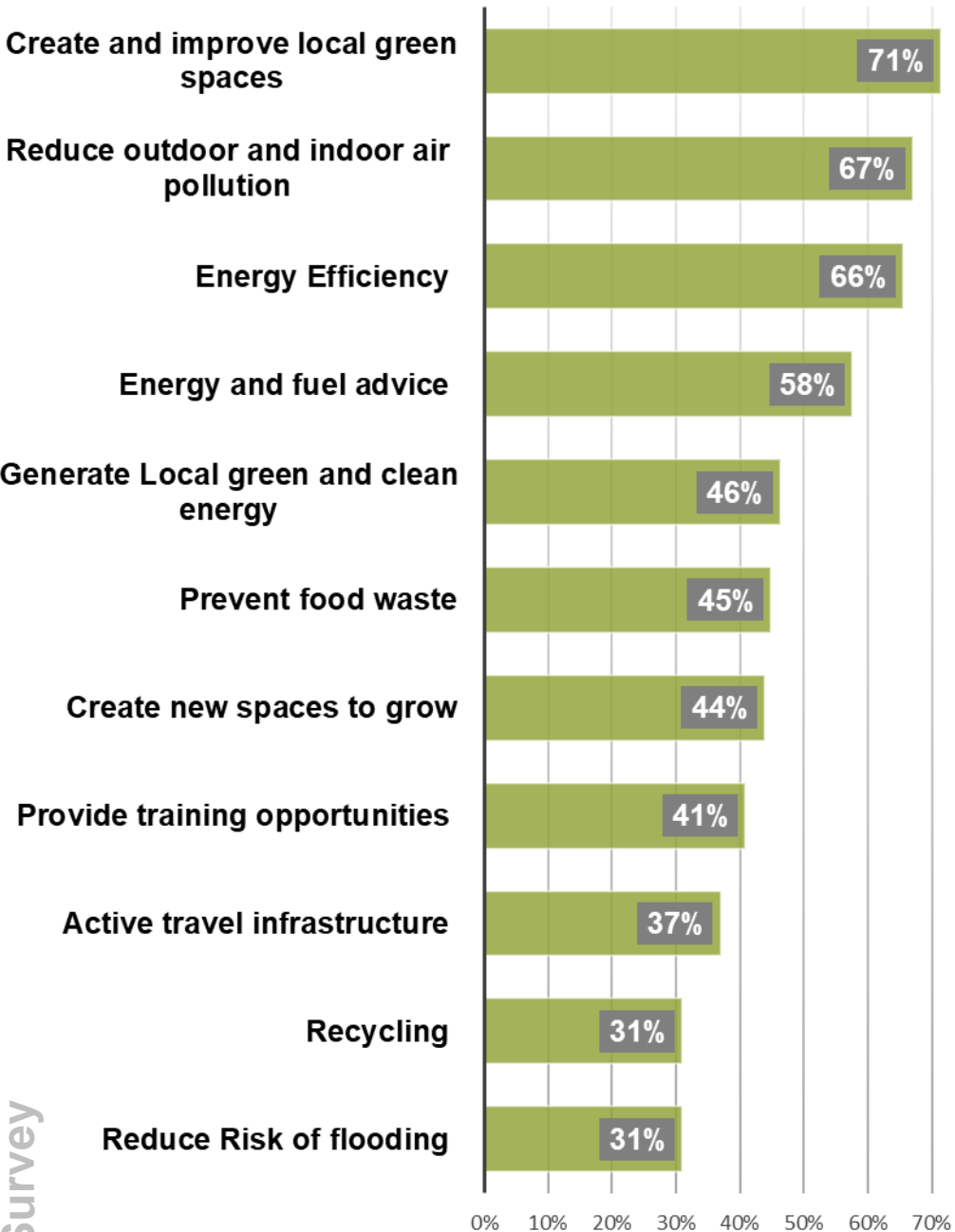


1 = issue that has impacted your neighbourhood the most and 5 = issue that has impacted your neighbourhood the least)

We asked the survey respondents to rank the environmental issues that impacted their neighbourhood the most to help us understand the environmental changes that need to happen in Notting Dale to create an eco-neighbourhood. The five environmental issues included align with the Council's environmental commitments adopted in the Green Plan and with the key issues requested by the Mayor of London to be addressed under the Future Neighbourhoods 2030 programme. Out of **203** surveys:

- 1. Air quality** emerged as the most frequently first ranked concern, 33 percent of respondents identifying it as their top priority, and 32 percent of respondents identifying it as a second highest priority.
- 2. Climate Change** is the second highest priority issue for the residents with 21 percent of participants ranking it as their first issue and 27 percent of participants ranking it as their second highest priority issue impacting Notting Dale.
- 3. Fuel poverty:** 16 percent of respondents recognised it as their top priority issue, 13 percent as their second.
- 4. Waste:** 15 percent ranked waste as the most impactful issue for their neighbourhood, 11 percent rank it as the second.
- 5. Biodiversity:** 5 percent identified biodiversity as a first priority issue, 10 percent as their second.

Which environmental improvements would you like to see in Notting Dale?



Q2: What areas of improvements matter to the residents of Notting Dale most?

We asked Notting Dale community which environmental improvements they would like to see funded and delivered as part of the FN2030 programme. The question included a wide-range of 11 environmental improvements which would support with creating a sustainable eco-neighbourhood. We asked the respondents to select as many as they would like. The key results are outlined below:

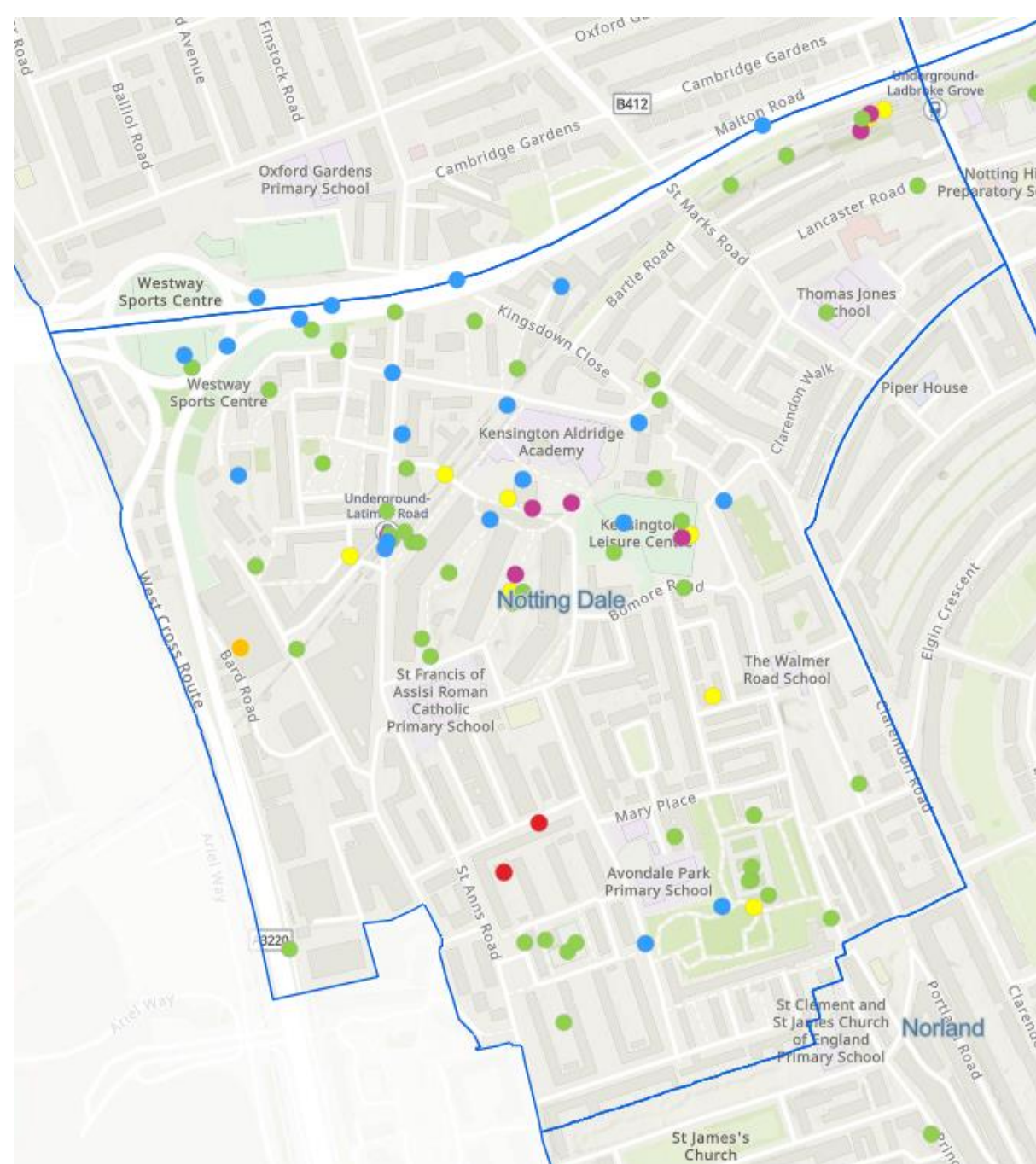
- **The creation and enhancement of local green spaces** was the highest area of improvement desired, receiving **71 percent** of the votes.
- **Reducing air pollution both outdoors and indoors** was the second highest area of improvement, with **67 percent** of the votes.
- **Energy efficiency and retrofit measures** ranked third, receiving **66 percent** of the votes, demonstrating the community's support to improve the energy efficiency of buildings such as social housing, schools, community centres and public buildings. Buildings represent the highest sources of emissions in Kensington and Chelsea.
- **Energy and fuel advice** ranked fourth with **58 percent** of participants choosing it as an improvement that matters to them.
- Other notable areas of improvement included local clean and green energy (46 percent), spaces to grow food (44 percent), preventing food waste (45 percent), and supporting education, training, and green job opportunities (41 percent).



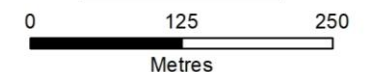
Notting Dale Ward

Survey Responses

	Energy Efficiency Generate Local Green and Clean Energy Energy and Fuel Advice
	Create and improve Local Green Spaces Create New Spaces to Grow Biodiversity
	Reduce outdoor and indoor Air Pollution Active Travel Infrastructure
	Recycling Prevent Food Waste Provide Training Opportunities
	Community Empowerment Safety
	Reduce Risk of Flooding
	Other



Map produced by:
RBKC Data Team
Date: 15/06/2023 | Ref: 0587_SR_253078



Locations for environmental improvements to be delivered

Respondents were requested to indicate their preferred locations for environmental improvements in Notting Dale, using either the provided map or the text box in the survey. The selected locations have been displayed on the map, clearly color-coded for easy reference. The suggestions for improvements covered a range of 15 categories, which are presented in the legend of the map.

These categories align with the types of improvements mentioned in Q2 (*What Areas of Improvements Matter to the Residents of Notting Dale Most?*), and additional categories such as safety and community empowerment were included to accommodate suggestions that did not fit the proposed categories.

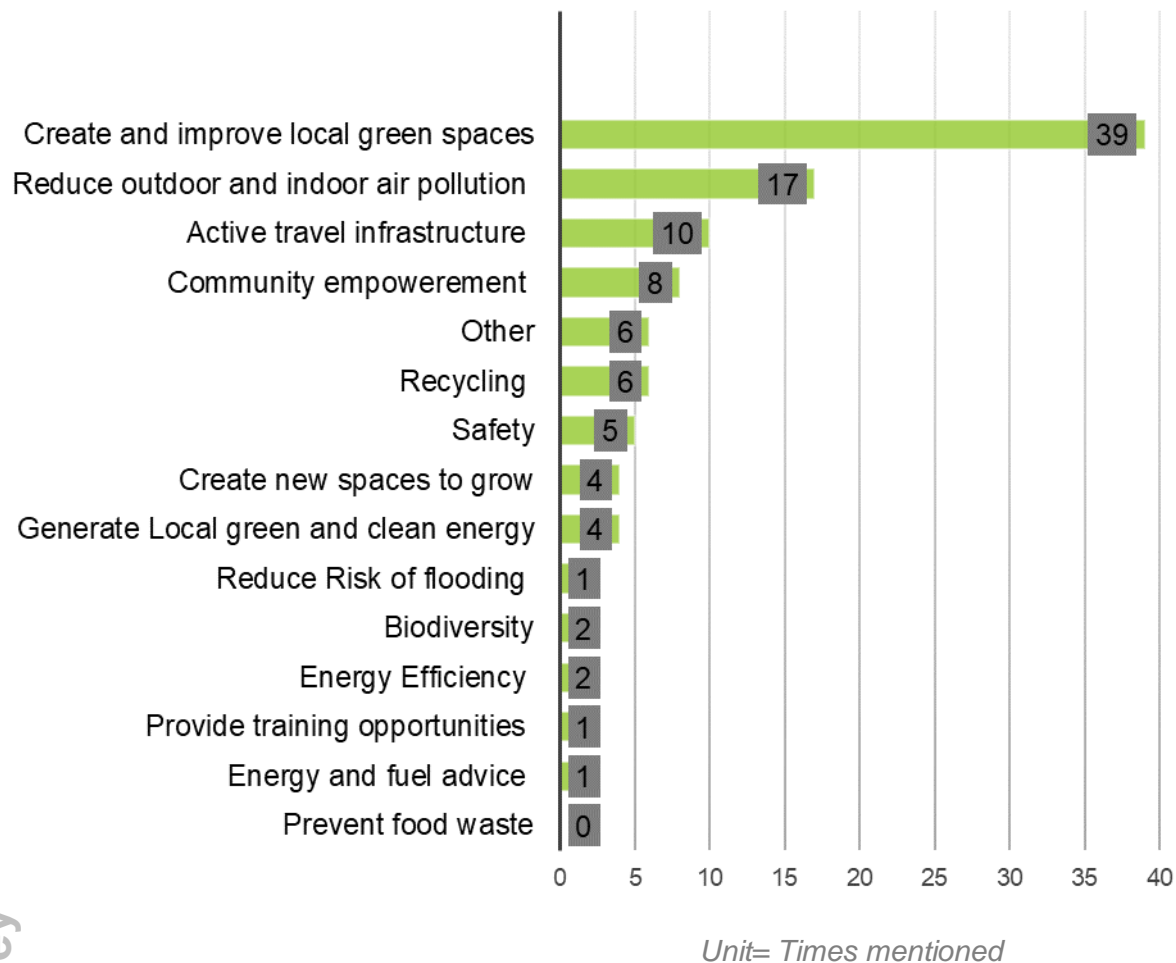
Latimer road station and the Westway were the most selected locations for interventions.

A more detailed map with the comments received from the community can be found here (or scan QR code):

[Notting Dale Future Neighbourhood 2030 – Strategy and Phase 3 priorities \(arcgis.com\)](https://www.arcgis.com)

What areas would you like to see improved in Notting Dale and why did you select these locations?

Thematic mapping of the areas of improvements that the community suggested



In additions to locating improvements on the map, respondents were invited to use the text box to explain why they have selected these locations and what type of environmental improvement(s) they would like to see there.

103 comments were received on the map, which we categorised, and colour coded. As with the map, the categories align with the types of improvements mentioned in Q2 with additional categories such as safety and community empowerment included to reflect the suggestions that did not fit in the proposed categories.

- **Creating and improving local green spaces** emerged as a reoccurring theme, with 48 suggestions. Ideas proposed by residents including more trees and flowers, community gardens and spaces to grow food.
- **Reducing outdoor and indoor air pollution** was another prevalent theme, with 20 recommendations. The suggestions focused on reducing through traffic in the ward, addressing pollution around the Westway motorway, reducing parking spaces for car and making Notting Dale a low traffic neighbourhood.
- **Promoting active travel infrastructure** was also a prominent topic, with 13 suggestions. Proposals included increasing the number of cycling lanes and pedestrian sone to reduce reliance on cars and improve transportation alternative options.

Some Suggestions, Concerns and Aspirations Expressed in the Survey



Respondents were asked to use the map and/or the text box to suggest any locations where they would like to see environmental improvements in Notting Dale. We asked them to clarify why they chose this location and what environmental improvement they would like to see there. Below are some of the responses received grouped under the environmental improvements' list.

- **Reduce air pollution:** Most suggestions included on the map relate to improving air quality in the most polluted areas such as Westway motorway and Latimer Tube station. Some of the ideas proposed were to make Notting Dale a low traffic neighbourhood, reduce through traffic, repurpose car parking spaces for parklets and green spaces, introduce one way system and pavement widening.
- **Active travel:** Creating cycle lanes throughout Notting Dale was proposed by several residents. Solutions proposed were to remove parking spaces to discourage car ownership and improve air quality and to increase the number of trees which can then contribute to a more sustainable transportation system and a greener environment. Closing streets to cars near schools during drop-off and pick-up hours was also suggested.
- **Local clean and green energy:** Residents would like to see more community owned solar projects installed on suitable Council owned buildings. The profits from these projects can be used to fund other environmental projects in the area, as well as provide development and training opportunities for members of the local co-operative that would own the solar arrays.
- **Energy efficiency:** Residents highlighted the importance of implementing energy efficiency projects across the ward and introducing rainwater collection as part of roof works. Also, community members emphasised the importance of constructing resilient buildings to prevent disasters like the Grenfell tragedy. They also highlighted the need for better housing improvements and crime prevention measures.
- Some respondents suggested improving consultations about new developments in the area and involving residents in planning applications early on.
- **Health and wellbeing (Other):** Providing support to the victims of the Grenfell tragedy is essential to address their needs and promote healing. Also, residents suggested better care for the community and addressing mental health issues as important aspects of creating a supportive and sustainable environment.
- **Spaces to grow food:** Residents expressed a need for more community kitchen gardens and allotments to grow food, as the current wait time is four years. They suggested estate gardens to be used. Additionally, residents highlighted the importance of outdoor exercise facilities to promote health and well-being.
- **Planting trees** and organising community activities can contribute to a stronger sense of community and environmental awareness.
- **Reduce flooding** especially in the areas most affected by recent flooding incidents (e.g., Stoneleigh Place). Retrofitting to prevent future incidents and enhance environmental resilience, reducing the risk of recurring floods, providing energy and fuel advice to residents and creating new local job opportunities.

Q3: Insight on the Priority Themes for FN2030 programme

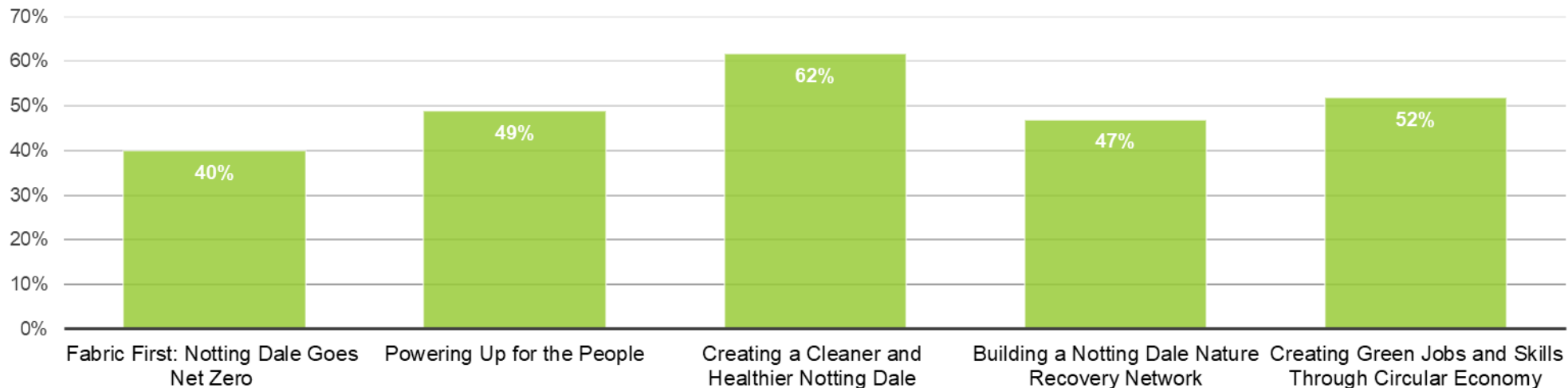
We asked participants to indicate what environmental themes held importance to them. The five themes proposed are the ones used in Phase 1 and Phase 2 of the Notting Dale FN2030 programme and align with the Mayor of London's FN2030 objectives and the Council's Green Plan environmental commitments. Residents were asked to select as many as they deemed relevant.

The key results show:

- **"Creating a Cleaner and Healthier Notting Dale"** received the highest number of votes, with 62 percent of participants selecting it as a priority theme. This theme includes the promoting active travel initiatives, and enhancing walking and cycling options are significant priorities for the residents.
- **"Creating Green Jobs and Skills Through Circular Economy"** came second with 52 percent of the votes. This indicates an interest among respondents in supporting a local green and circular economy, generating green employment opportunities, and promoting green skills and training related to sustainability.
- **"Powering Up for the People: Clean, Green and Local Energy"** and **"Building a Notting Dale Nature Recovery Network"** received **49 percent** and **47 percent** of the votes, respectively.
- **"Fabric First: Notting Dale Goes Net Zero"** received **40 percent** of participants' votes, highlighting the importance of retrofitting homes, commercial and public buildings to achieve the 2040 carbon neutral targets.

It is important to note that the difference between preference is not significant in some themes, which may be read as there is no polarisation in terms of what residents prioritise. Overall, residents have ranked all five environmental themes as important for creating an eco-neighbourhood and tackling the environmental issues in Notting Dale.

What Environmental themes matter to you?

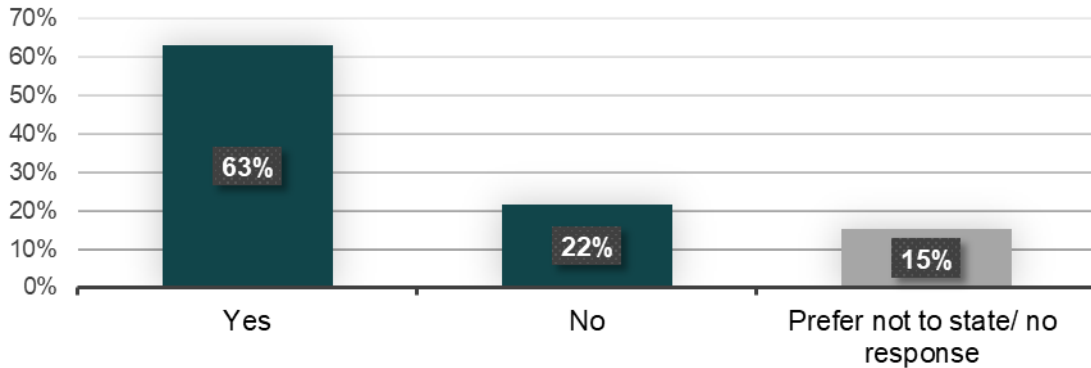


Section 2: About You: Demographic Breakdown

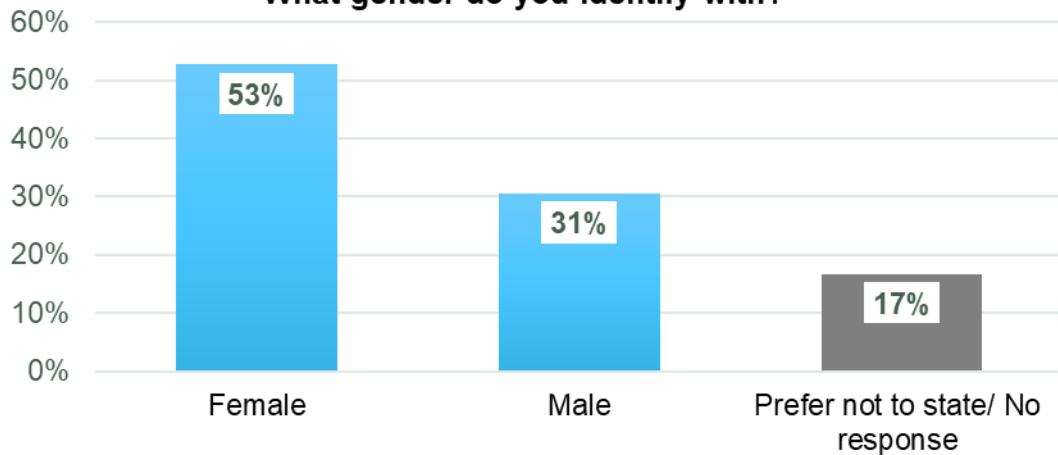
Demographic Questions: Relation to Notting Dale and Gender

A set of demographic questions were asked but these were voluntary and without obligation for participants. Responses to these questions will not be used to identify individuals but they help us to ensure the voices from respondents of all backgrounds, identities, locations, and abilities are heard. The results below are based on the total number of respondents to the survey – 203.

Are you a resident of Notting Dale?



What gender do you identify with?



The survey participants were asked whether they were residents of Notting Dale.

- 63 percent of respondents confirmed that they are residents of Notting Dale.
- 22 percent of respondents indicated that they are not residents of Notting Dale.
- 15 percent preferred not to state their residency status and/or not responded to the question.

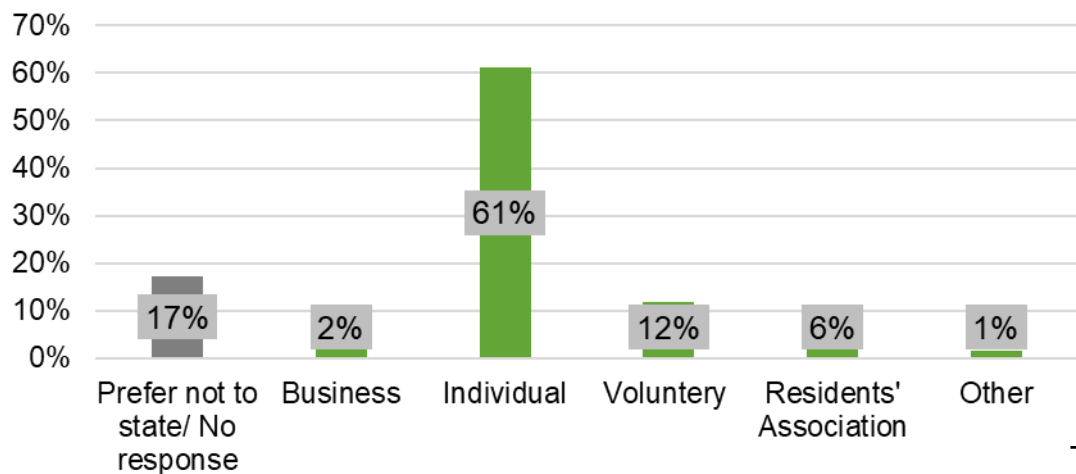
The survey participants were asked to identify their gender.

- 53 percent respondents identified as female.
- 31 percent respondents identified as male.
- 17 percent respondents preferred not to state their gender and/or not responded to the question.



Demographic Questions: Relation to Notting Dale and Age

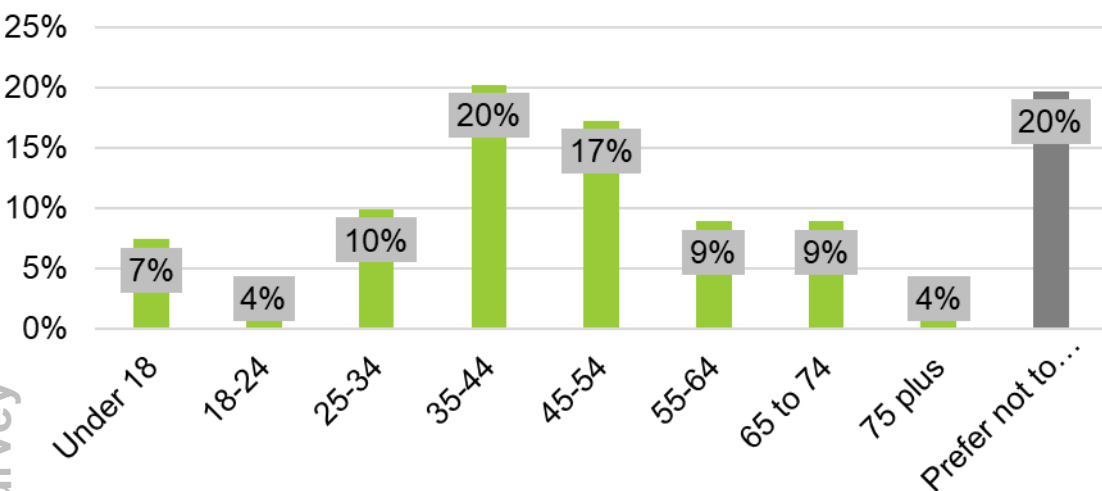
Are you filling in this survey as a resident, a representative of a voluntary or community organisation or local business?



Survey respondents were asked to identify their role or affiliation.

- 61 percent of respondents identified themselves as individuals.
- 17 percent preferred not to state their affiliation and/or did not respond .
- 12 percent of respondents were affiliated with voluntary organisations.
- 6 percent represented Residents' Associations.
- 2 percent were from local businesses.
- 1 Percent fell into the "Other" category.

Which age group do you belong to?



The survey asked the participants to choose which age group they belonged to.

- 20 percent of respondents belong to the age group of 35-44.
- 17 percent fall into the age group of 45-54.
- 10 percent of respondents are between the ages of 25-34.
- Both the age groups of 55-64 and 65-74 account for 9 percent each.
- 7 percent of respondents are under 18 years old.
- Age groups 18-24 and 75 plus have the same percentage of 4 percent .
- 20 percent of respondents preferred not to state their age.

Draw your Future Neighbourhood!

Draw what you imagine a greener Notting Dale would look like. Are there trees flowers? What do the houses look like and how are they getting their energy? What are the people doing and do they cycle or walk to school and work? You decide!



Being 'greener' is about looking after our planet and living in a way that does not destroy or use up all our natural resources, e.g. cycling, repairing broken items, or using renewable energy instead of fossil fuels! What does it mean to you?

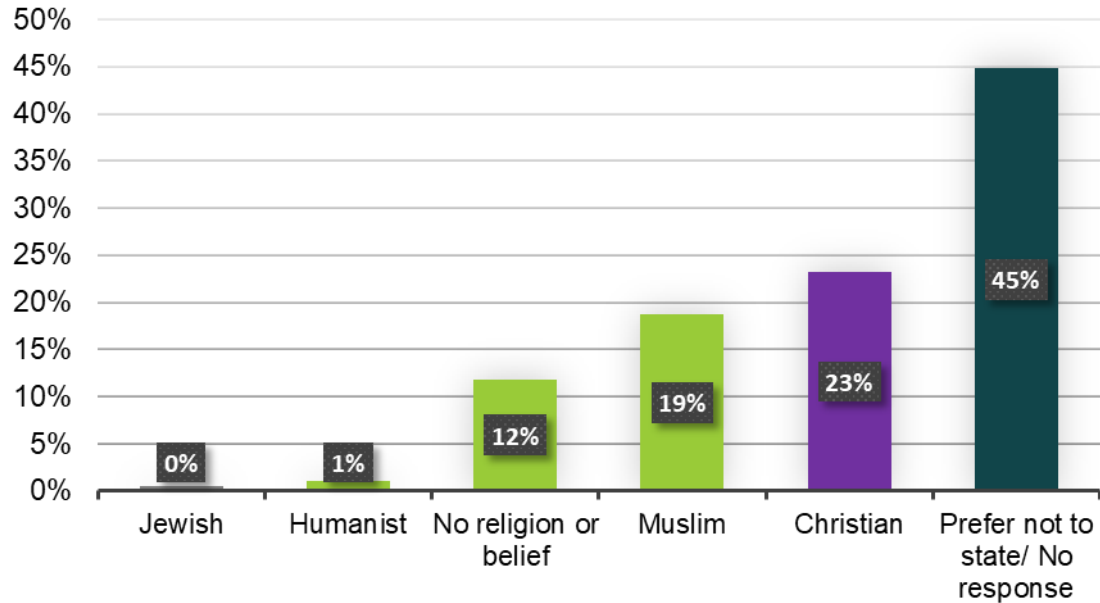
Word Search!

R NOTTINGDALE
L DOOCEUMJBHS
C IGRLLKYTXVI
U VHKILXSPJNAV
L LYJMOEURCS
D WPPAKXSEEIZ
G GA ST PZTGNPM
B PPYEPKARAEA
R ECYCLEIEEFAR
M UKXHSANEGPV
P CALABMANSZJ
D ACUNYDBFFOP
G NKXGXGLHJSL
A AQIEKZEFEXW
A CMXRSXRSOWF

Climate Change Sustainable
Energy Repair
Solar Notting Dale

Demographic Questions: Religion & Preferred Engagement level

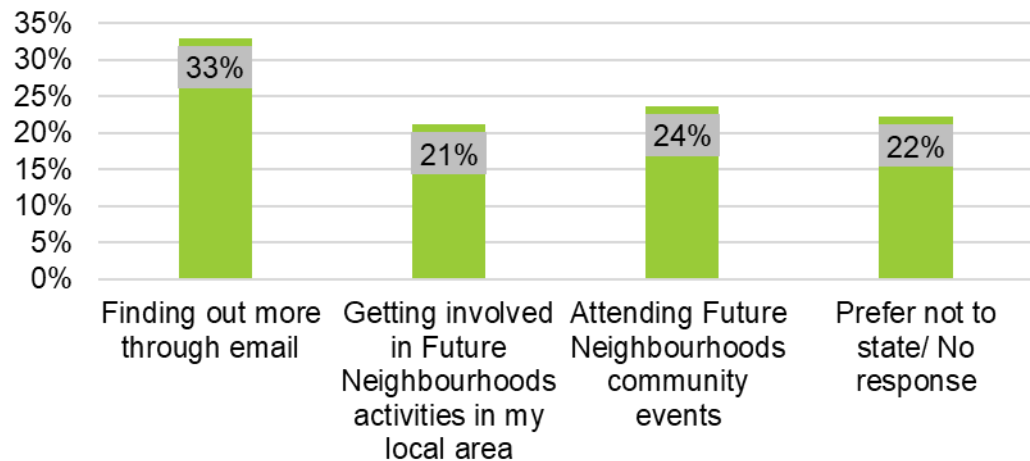
What is your religion or belief?



Religious Affiliation of Survey Respondents:

- 45 percent of respondents preferred not to state their religion or belief and/or did not respond to this question.
- 23 percent of respondents identified as Christian.
- 19 percent of respondents identified as Muslim.
- 12 percent of respondents reported having no religion or belief.
- Humanists accounted for 1 percent of the respondents.
- None of the respondents identified as Jewish.

How do you want to be engaged in the strategy process?

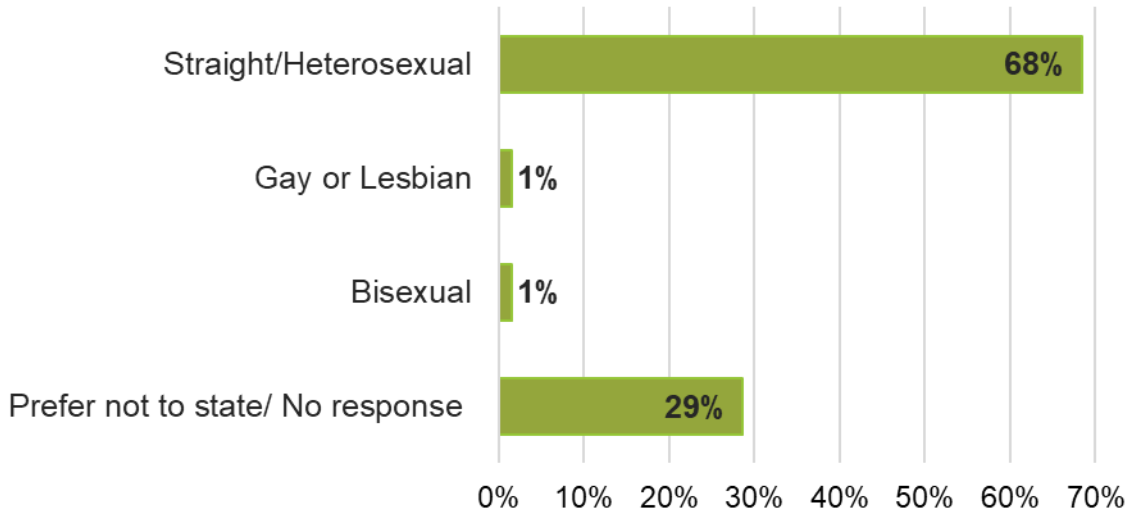


Preferred Engagement in the Strategy Process:

- 33 percent of respondents expressed interest in receiving more information through email.
- 23.7 percent of respondents indicated their willingness to attend Future Neighbourhoods community events.
- 21.1 percent of respondents preferred getting involved in Future Neighbourhoods activities in their local area.
- 22.2 percent of respondents chose not to state their preferred mode of engagement and/or did not respond to this question.

Demographic Questions: Sexual orientation and Post Codes

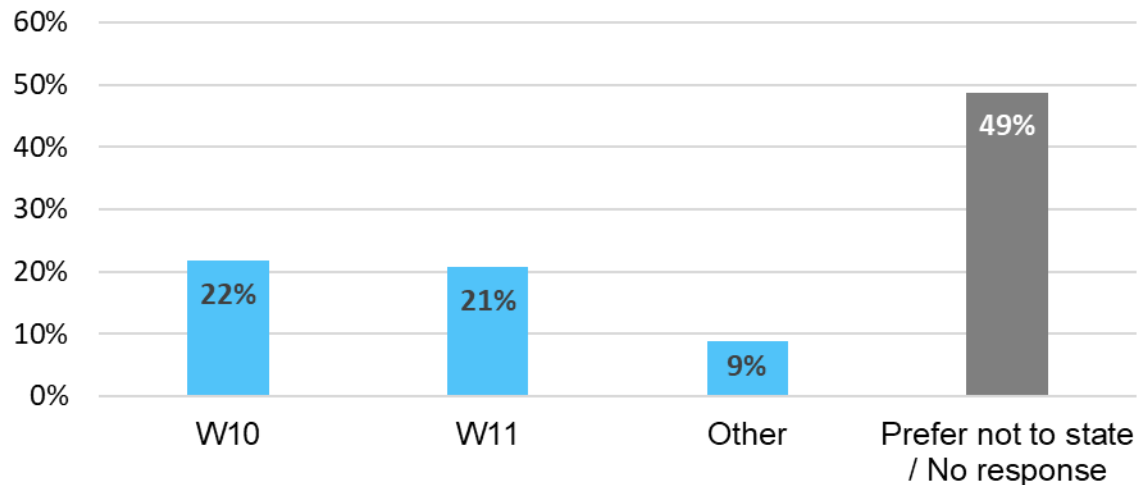
Which of the following best describes your sexual orientation?



The distribution of survey respondents based on their sexual orientation:

- 68.5 percent of respondents identified as straight/heterosexual.
- 28.6 percent of respondents preferred not to state their sexual orientation.
- Both bisexual and gay/lesbian orientations accounted for 1.5 percent each.

Postcodes of respondents



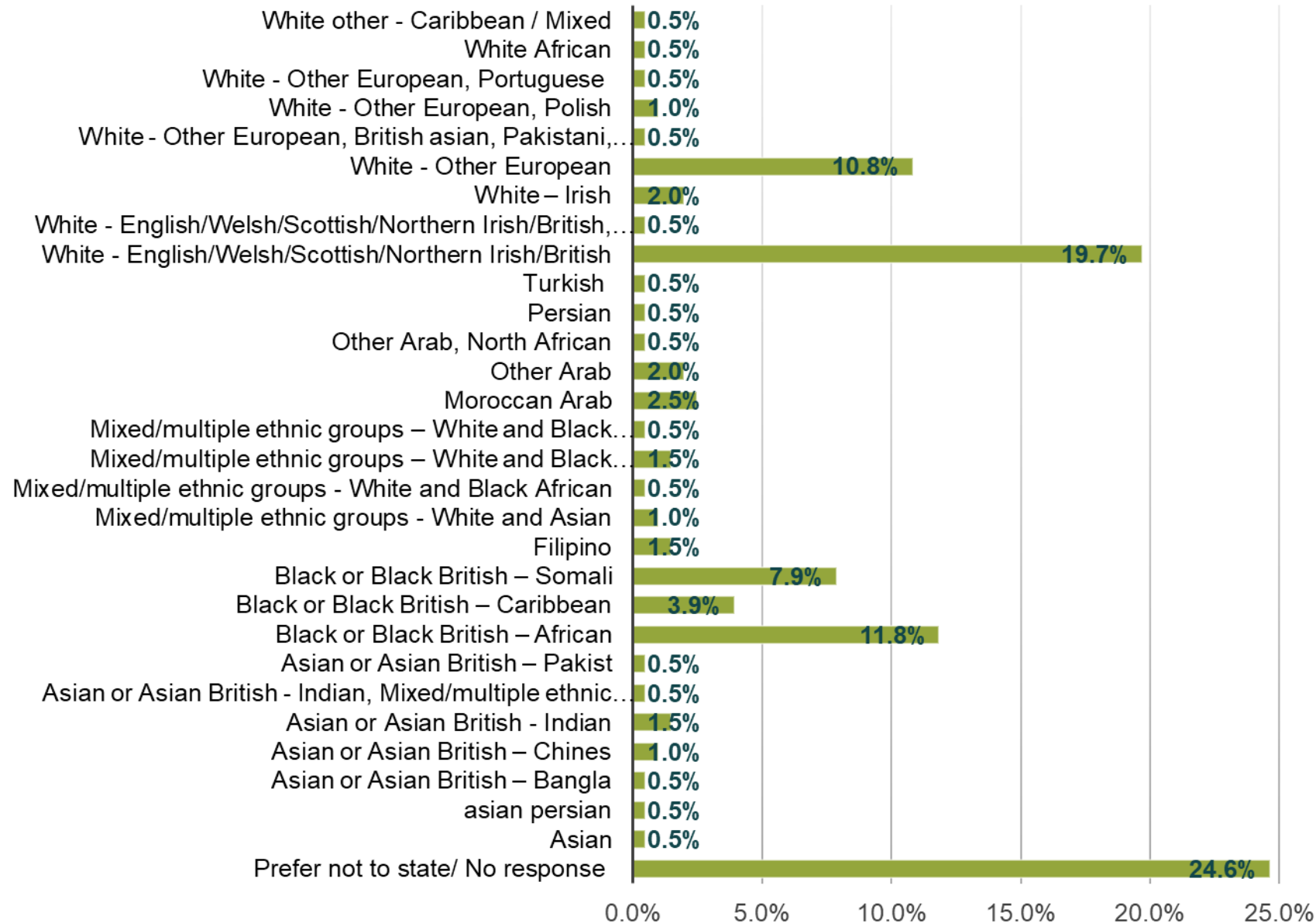
43 percent of participants responded that they live in W10 and W11. The distribution of the survey respondents based on their postcodes:

- **The postcode W10 accounted for 22 percent of the respondents.**
- **The postcode W11 represented 21 percent of the respondents.**
- 9 percent of respondents indicated "Other" postcodes.
- A significant proportion of 49 percent preferred not to state their postcode and/or did not respond to this question.



Demographic Questions: Ethnicity

How would you describe your ethnicity



Chapter 2

Community Roadshows

Notting Dale Future Neighbourhoods 2030



SUPPORTED BY
MAYOR OF LONDON



THE ROYAL BOROUGH OF
**KENSINGTON
AND CHELSEA**



As part of the engagement and consultation process four community roadshow events were organised across different locations in Notting Dale. The aim was to ensure the local community and residents have their voice heard and get involved in co-designing the long-term environmental strategy for Notting Dale. Residents were asked to have their say in the environmental improvements that need to happen locally and the priorities they would like to see in the Phase 3 round of funding, coming in the summer.

To gather input from the community and ensure participants take part in discussions and share their views, a pop-up engagement approach was used. The Council's Future Neighbourhoods 2030 Team together with our partners Arup who brought a team of designers, sustainability and engagement experts moved across four distinct locations in Notting Dale. These locations were proposed by the members of the Steering Group to ensure diverse and inclusive participation from various demographics.

- North Kensington Leisure Centre – 22nd April 2023
- Avondale Park – 22nd April 2023
- Henry Dickens Community Centre – 26th April 2023
- Latimer Church and Latimer Tube Station – 26th April 2023

During these events, 135 people registered on the day as participants but we estimate that more than 200 people were engaged and provided their feedback.

These were primarily residents living in Notting Dale, as well as individuals who work, volunteer, study, play/use amenities in Notting Dale or live nearby.

Engagement boards were created for residents to provide their input and feedback and the questions included during the community roadshows align with the survey questions.

Q1: Issues

What environmental issues do you think have impacted your neighbourhood the most?

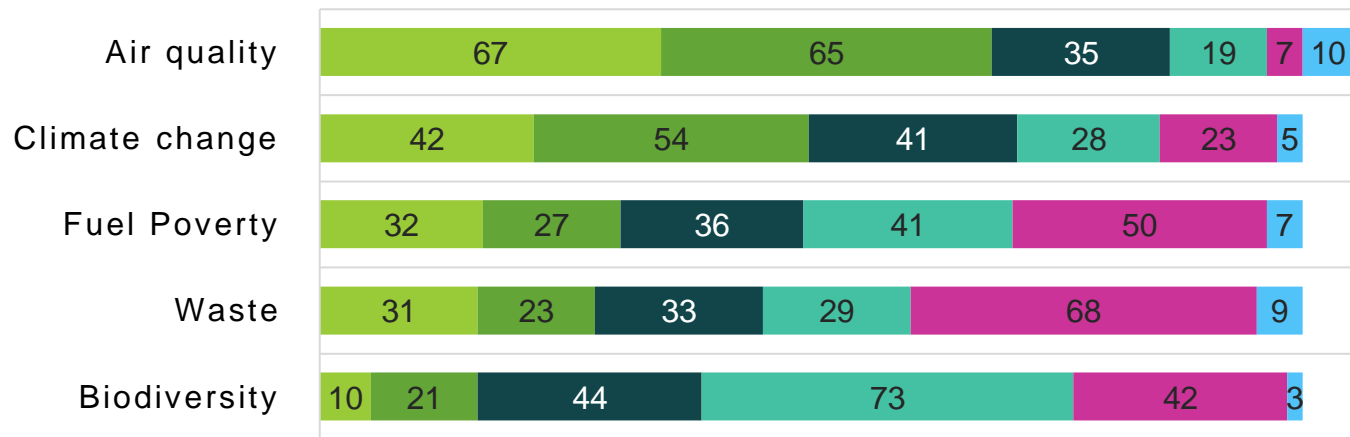
As per the survey, we also asked the participants during the community roadshows to rank the environmental issues that impacted their neighbourhood the most to help us understand the environmental changes that need to happen in Notting Dale to create an eco-neighbourhood. The five environmental issues included align with the Council's environmental commitments adopted in the Green Plan and with the key issues requested by the Mayor of London to be addressed under the Future Neighbourhoods 2030 programme. Numbered stickers representing the degree of impact (1 being the most severe, 5 the least) were used by participants to rank their preference. The responses received are explained below:

- **Air quality** is identified by 67 people as the most pressing issues for the community and 65 people identified it as a second priority issue.
- **Climate change** comes next with 42 people voting for it as a first priority issue and 54 people selecting it as a second priority issue.
- **Fuel Poverty** comes third with 32 people selecting it as a first priority issue and 27 people choosing it as a second priority issue.

The results collected on this questions during the community roadshows are very similar with the responses from the survey where residents also ranked air quality as the main issue, followed by climate change as second and fuel poverty as third.

Note: *Numbers were used instead of percentage to ensure accurate representation of engagement, given that the actual number of engaged people is higher than the number of people who registered during these events.

What environmental issues do you think have impacted your neighbourhood the most?



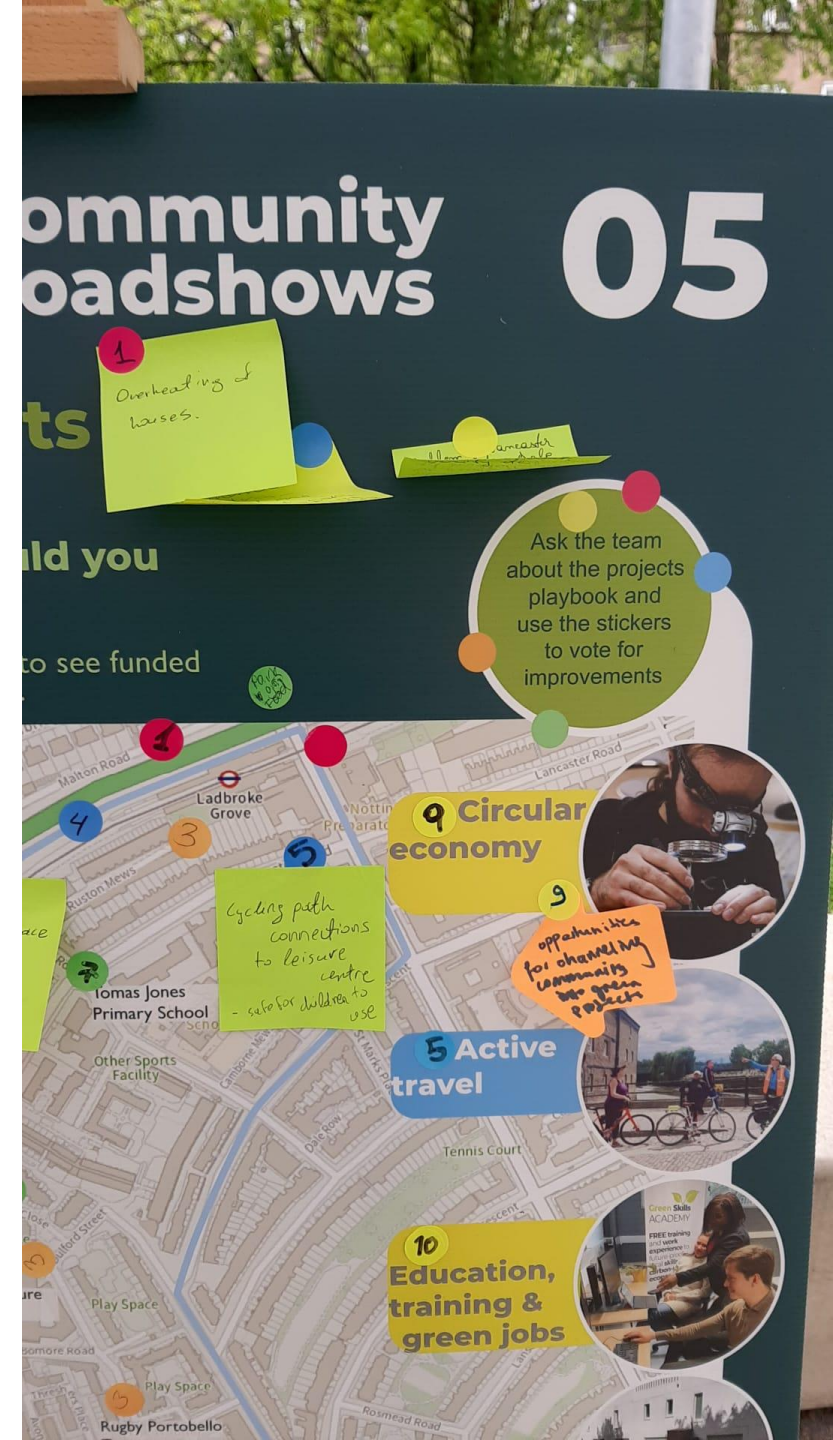
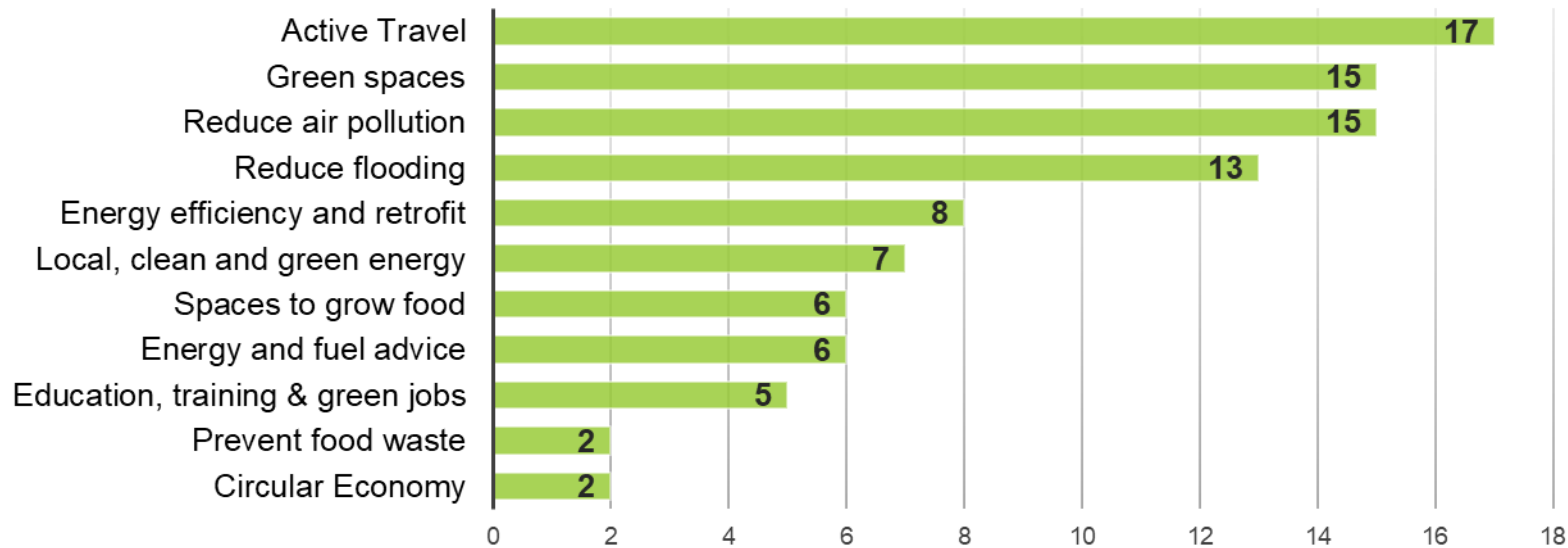
Q2: Improvements- Quantitative

Which environmental improvements would you like to see in Notting Dale? Please select as many as you would like to see

During the community roadshows we asked people which environmental improvements they would like to see implemented and funded in Notting Dale. This question was also reflected in the survey. A ward map was included on the engagement boards to support participants to indicate/mark the locations where they want the activities to happen. We proposed a broad selection of 11 environmental improvements aimed at promoting a sustainable eco-neighbourhood. Each suggested improvements was assigned a unique number for easy identification. Participants were then encouraged to place stickers on the map corresponding to the numbers associated with the improvements they considered most important.

- **'Active Travel'** received the highest support, receiving 17 votes.
- **'Green Spaces'** and **'Reducing Air Pollution'** each received backing as well, with 15 votes each.
- **'Reduce Flooding'** was another important improvements flagged during the roadshows, accumulating 13 votes.

Which environmental improvements would you like to see in Notting Dale?



Q2: Improvements- Qualitative

Which environmental improvements would you like to see in Notting Dale? Please select as many as you would like to see

In addition, participants were also encouraged to propose their ideas for desired improvements by adding a note on the board, following a similar format as per the survey questions. This is a snippet of the ideas we received via sticky notes. The responses received were included under different categories that align with the environmental improvements' list.

Energy Efficiency:

- Implementing energy-saving measures like double glazing on all homes to reduce energy costs.
- Offering discounted energy rates for residents who sell energy back to the grid.
- Installing solar panels in schools and providing financial incentives for sustainable behaviour.

Active Travel:

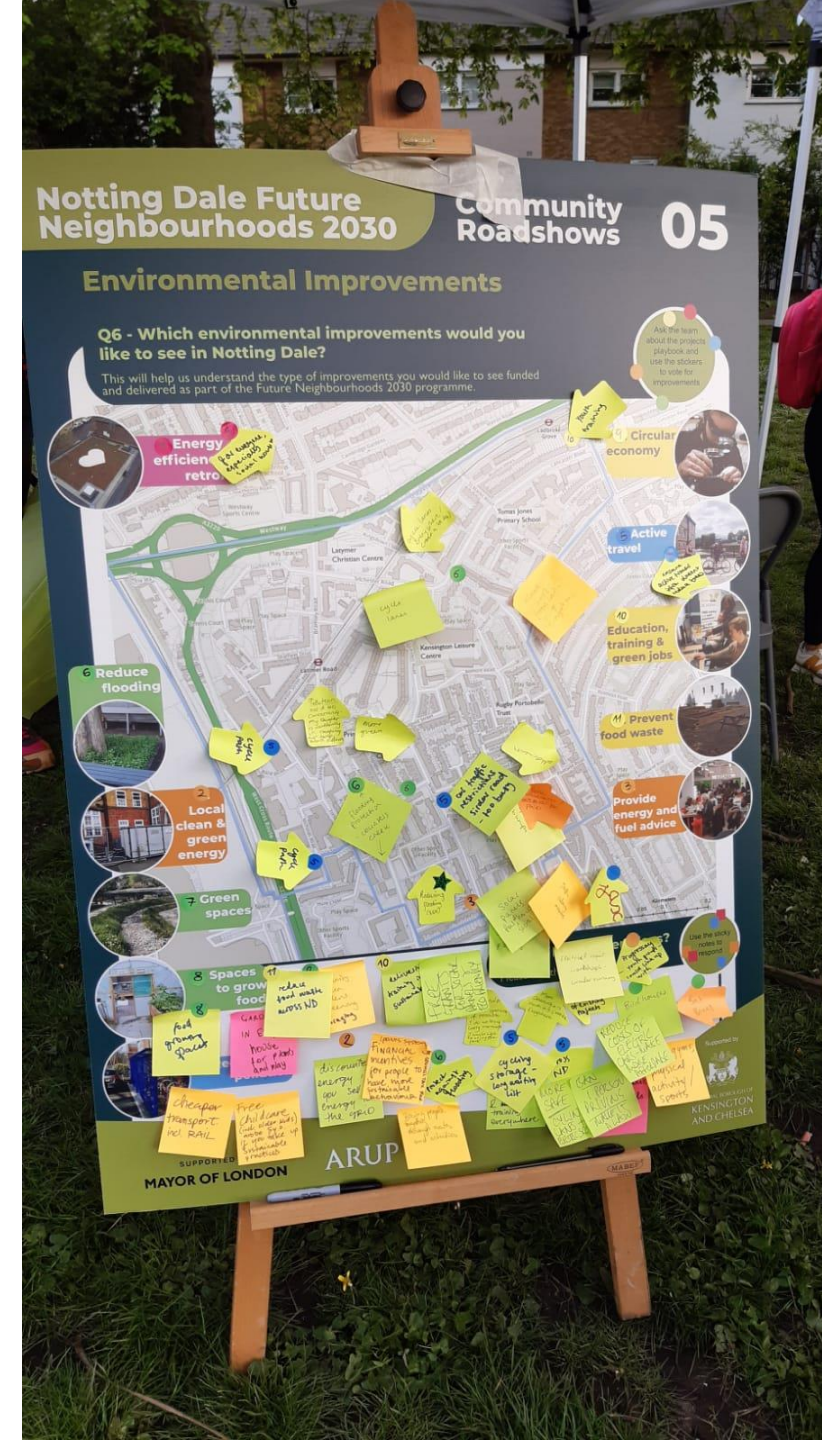
- Creating a 15-minute neighbourhood concept, where essential amenities and services are within walking distance.
- Cheaper transport options, including improved rail services.
- Education on alternative transportation modes.
- Creating safer cycling lanes and promoting the use of electric scooters.
- Introducing activities such as cycle repair workshops in parks.

Prevent food waste:

- Community-driven initiatives to reduce food waste, including community kitchens and gardens.
- Encouraging foraging and promoting a holistic approach to nutrition.

Health and wellbeing and community cohesion (Other):

- Providing outdoor sports opportunities and activities for young people and children.
- Establishing youth groups, clubs, and offering training programs for skill development.
- Expanding the availability of outdoors gyms and recreational spaces for physical activities and exercise.
- Addressing noise pollution concerns within the community.
- Establishing a health and wellness centre as a hub for health and natural well-being.
- Organising community events and activities to foster a sense of togetherness.



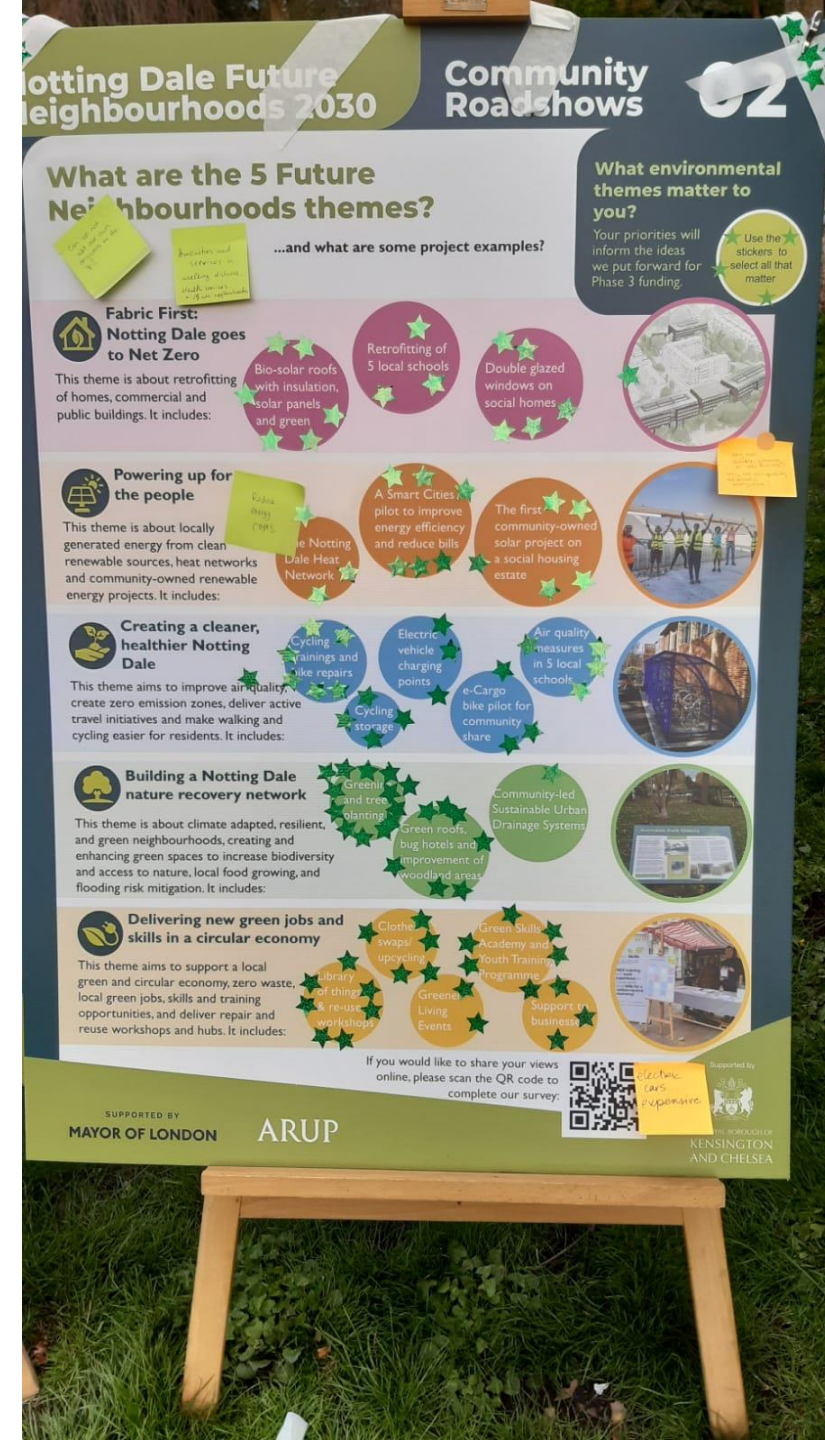
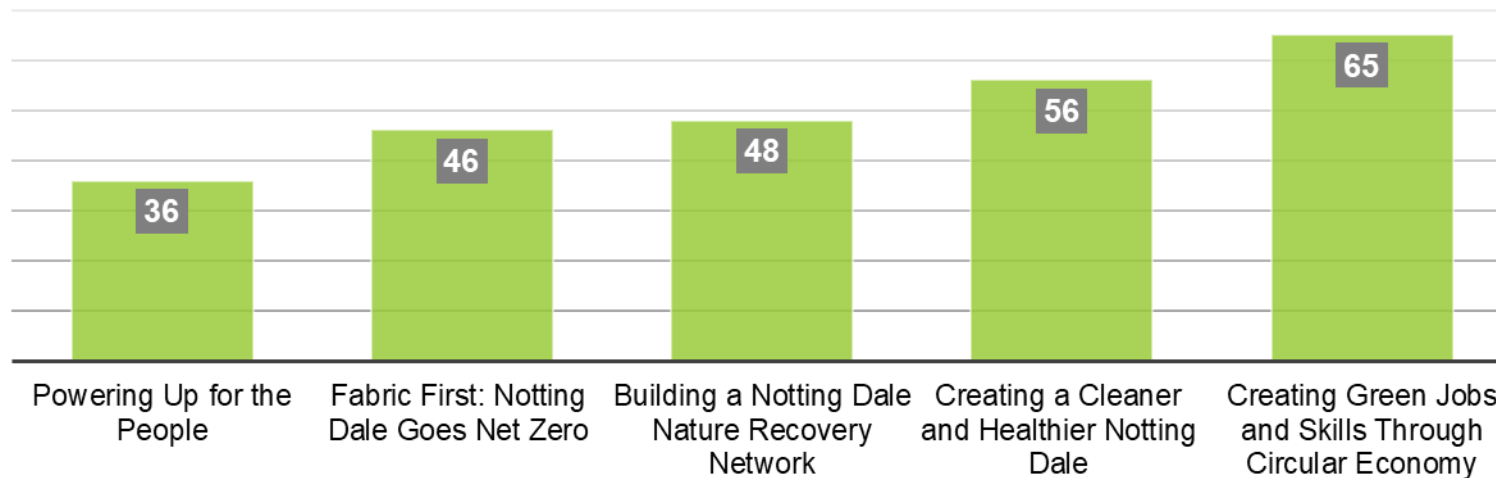
Q3: Priorities

What environmental themes matters to you?

We asked the community to identify (by posting a star) which environmental theme matters to them the most out of the five themes of the Notting Dale FN2030 programme. The five themes proposed are the ones used in Phase 1 and Phase 2 of the Notting Dale FN2030 programme and align with the Mayor of London's FN2030 objectives and the Council's Green Plan environmental commitments. Participants who answered this question were asked to select as many as they needed. The list below demonstrates how the community prioritises the themes. Overall, respondents recognised that all five environmental themes are important.

1. **Creating Green Jobs** received 65 votes. This theme focuses on creating employment opportunities for green jobs and training and encourages a local green and circular economy.
2. **Creating a Cleaner and Healthier Notting Dale** received 56 votes. This theme focuses on improving air quality, creating zero emissions zones making cycling and walking accessible in Notting Dale.
3. **Building a Notting Dale Nature Recovery Network** received 48 responses. This theme focuses on creating resilient and adapted neighbourhoods to climate change, enhancing green spaces to increase biodiversity and access to nature, local food growing spaces and reducing the risk of flooding.
4. **Fabric First: Notting Dale Goes Net Zero** received 46 votes. This theme revolves around retrofitting of homes and public buildings.
5. **Powering Up for the People:** received 36 votes. This theme focuses on providing local, clean and green

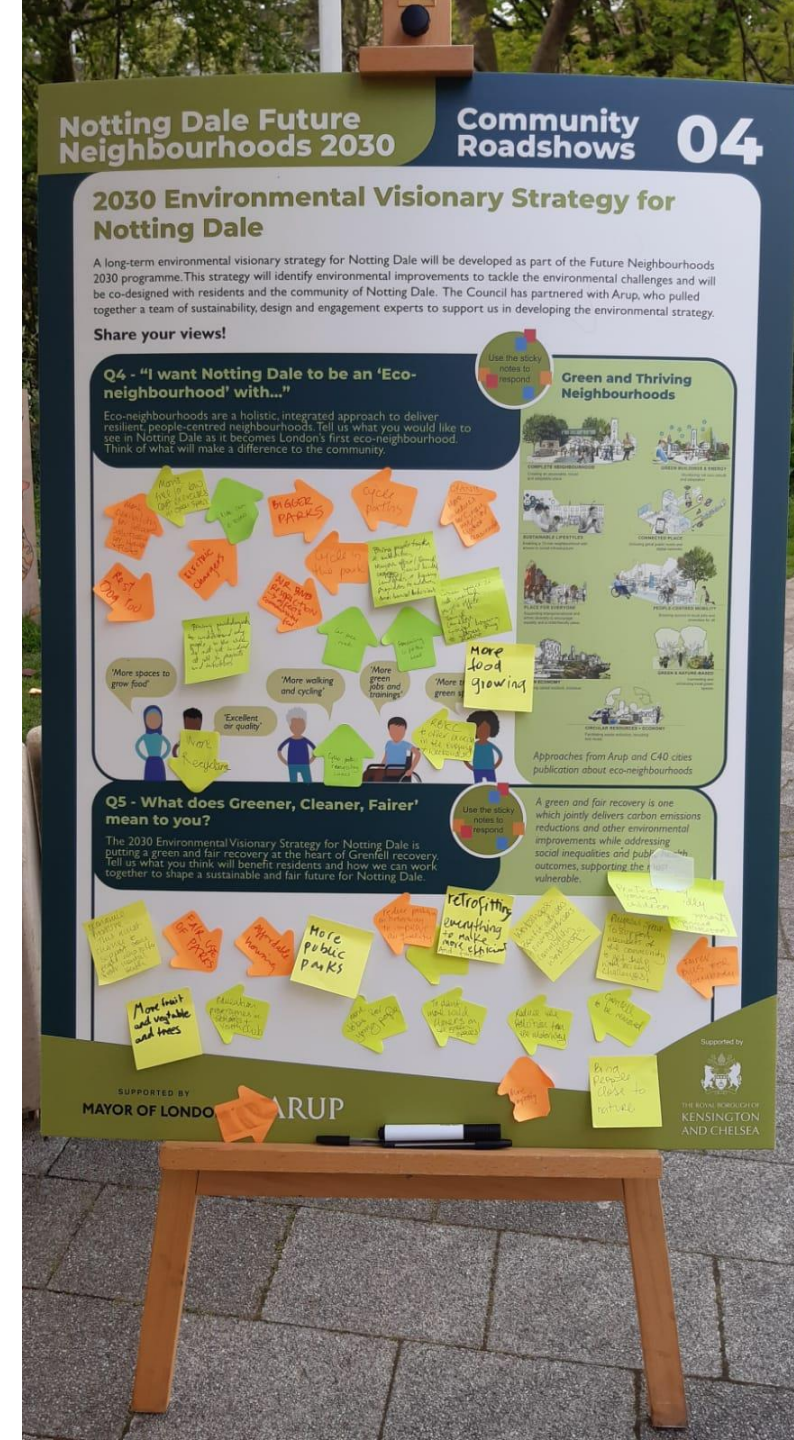
What environmental themes matters to you? Select all that apply



Q4: Vision

As part of co-designing the environmental strategy with the community, participants were asked to tell us what they would like to see in Notting Dale as it becomes an exemplar eco-neighbourhood. The table below presents a summary of the comments received included under different categories that align with the environmental improvements' list.

Thematic Area	Description	Number of Comments
Green Spaces	Prioritising the creation and maintenance of green spaces such as parks, outdoor food-growing, planting more trees and wildflowers.	23
Spaces to grow food	Prioritising environmental protection and protecting wildlife and bees.	18
Food waste	Introducing composting and recycling measures.	
Recycling		
Provide training opportunities	Prioritising training and workshops on sustainable practices with the aim of empowering residents to take an active role in promoting environmental sustainability.	14
Active Travel	Install sustainable transport infrastructure such as bike lanes, accessible bike storage and introduce car-sharing schemes, with the aim of reducing pollution and promoting active travel.	8
Energy Efficiency	Prioritising affordable housing for all residents, with a focus on retrofitting buildings to be more energy-efficient and fairer. Install solar panels and affordable green energy. Introduce measures to address fuel poverty and reduce energy consumption and emissions from buildings.	4
Health and Wellbeing and Community Cohesion (Other)	Prioritising community engagement through workshops, events, and programs, with the aim of fostering a sense of community and encouraging active participation from residents. Prioritising equal access to sustainable resources for all residents, regardless of income, age, or ability.	4



Chapter 3

Stakeholders Workshop

Notting Dale Future Neighbourhoods 2030



SUPPORTED BY
MAYOR OF LONDON



THE ROYAL BOROUGH OF
**KENSINGTON
AND CHELSEA**

Stakeholders' workshop

A Stakeholder Workshop was organised on the 24th of May 2023 which brought together Council officers, representatives from community organisations and voluntary sector, faith groups, residents' associations and ward councillors. This section summarises the valuable insights gathered during this workshop on the opportunities, challenges, and methods to achieve a greener, cleaner, and fairer eco neighbourhood. It also discusses the potential legacy of the FN2030 programme. More than 30 people attended in a hybrid format, online and in person.

The key points explored during the workshop are:

- Key initiatives supporting the FN2030 themes
- What is missing?
- Opportunities and challenges for the delivery of the Future Neighbourhood's proposed improvements, integration, creating value, collaboration & partnership as Phase 3 funding application.
- How the FN2030 programme can help achieve a greener, cleaner, and fairer eco-neighbourhood?
- How the future neighbourhood programme and the partners can create legacy beyond the Mayor of London FN2030 funding cycle?



What are you doing to help achieve the 5 priorities?

All participants attending the stakeholder workshop are actively involved in the community and are currently delivering initiatives, community services and/or activities for the benefit of the community that align with the FN2030 priorities.



Fabric First: Notting Dale Goes Net Zero

Retrofitting projects on Lancaster West Estates, Henry Dickens and Silchester estates and in local schools were mentioned. Fuel poverty initiatives supported and/or signposted by community organisations and frontline workers have been key in supporting vulnerable residents during winter months.

Creating Green Jobs and Skills Through a Circular Economy

Local groups and volunteers contribute significantly to the community. Clothes and upcycling workshops and repairs cafes were mentioned as examples of initiatives which have been very well attended and received by residents, emphasising the importance of consumption-based emissions. Sustainability and environmental courses are being introduced and delivered by the Council, different local partners and community organisations.

Building a Notting Dale Nature Recovery Network

From community growing initiatives, gardening for wellbeing and social connection, conservation volunteering programme in Holland Park, Urban Tree Challenge Fund, environmental walks for residents and families were mentioned by participants as activities already happening.



Creating a Cleaner and Healthier Notting Dale: Discussed initiatives range from conducting air quality audits at schools to social cycling programmes and cycling storage being introduced across Notting Dale. The Westway Trust is campaigning against air pollution, earmarking budget for this cause. Health and wellbeing initiatives are also available for residents.



Powering up for the People- Clean, Green and Local Energy:

Repowering London and North Kensington Community Energy (NKCE) are working on community-owned solar arrays. They are also offering youth training on green skills. NKCE has hosted a Greener Living Day, empowering residents to take environmental action. A heat network will be installed in Notting Dale.



Other Initiatives: Coordinated efforts are ongoing to align the FN2030 project with the new Council Plan which focuses on three pillars: Greener, Safer and Fairer.

What is Missing?

- **Fabric First- Notting Dale Goes Net Zero:** Some of the key issues highlighted the need for enhanced support for leaseholders. This support includes providing more information and assistance in securing grants and funding. A linkage between retrofitting and community energy and include energy audits for community organisations were suggested.
- **Powering Up for the People- Clean, Green and Local Energy:** Stakeholders pointed out the need for informative campaigns about photovoltaics (PV). They suggested the publication of case studies and examples that showcase costs, the impact of storage/batteries, savings, and the overall business case for PV investment. There were calls for PV subsidies, installation of PV in public spaces, and infrastructure, like an Energy Local Club, to allow residents to directly benefit from solar installations on their homes. Stakeholders recommended establishing repeatable processes to expand community energy on social housing and increasing electric vehicle (EV) charging points across the borough and estates, linking these to Mayor of London Community Energy Fund.
- **Creating a Cleaner and Healthier Notting Dale:** Concerns were raised about rental bikes encroaching on pavement space, making it challenging for pedestrians. Stakeholders called for traffic safety improvements, such as implementing enforcement measures like speed cameras for safer cycling conditions. They also asked for additional air quality measures for schools, and more sustainable urban drainage systems (SUDs). Additional suggestions included more cycling lanes and routes and new school streets. Written and binding commitments from the Council to protect green spaces and ensure no net loss of trees was highlighted. The stakeholders also pointed out the low uptake of some initiatives due to unengaging messaging. In addition, there was a request to increase the greening of playgrounds and allotments and improve access to child-friendly spaces.
- **Other Concerns:** Stakeholders expressed the need for a comprehensive understanding of the environmental impacts of future developments, urging for a responsive strategy, especially with regards to transport infrastructure. They highlighted the importance of mindful communication when addressing vulnerable communities and the need for wealthier communities to take responsibility for their larger carbon footprints. They also noted the necessity to consider the impact on people with learning disabilities, physical disabilities, serious mental illness, global majorities, and low-income individuals. Stakeholders expressed the desire for more authentic and consistent communication, less branding, and broader engagement across the entire ward.
- Stakeholders suggested that long term funding and longevity of programmes is key to ensure success and leave a legacy. Increasing resources of existing communities, building their skillset, creating a network of support organisations and break silo working were proposed to be considered for FN2030 programme.



Opportunities for delivery, integration, creating value, collaboration & partnership as we apply for Phase 3 funding

Expansion & Integration

- The Lancaster West Heat Network has the potential for further expansion to connect nearby housing. The popularity of repair shops opens avenues for extending their functionality to upcycling furniture and white goods.
- There is an opportunity to develop a borough-wide local platform, akin to “Gumtree” and/or Library of Things to connect residents and facilitate reuse, thus promoting a circular economy.
- Develop a directory of local suppliers to improve local suppliers’ ability to compete for contracts.

Collaboration & Partnership

- Several entities, including schools, housing services, voluntary sector organisations, NHS, TfL and Social housing providers, were identified as potential partners for collaboration. Joint efforts with these institutions can significantly augment the reach and impact of projects. Schools, in particular, can develop projects for children fostering early adoption of sustainable practices.
- Create more spaces like the stakeholder workshop to bring a wide range of stakeholders together.

Communication & Community Engagement

- Suggestions included project highlights in Council magazines, such as the North Kensington newsletter and creating a dedicated Notting Dale social media platform for regular updates. This will ensure community members are aware of, and can actively participate in, ongoing projects.
- Creating a FN newsletter to promote the services, projects and activities available for the community and include an email address and contacts for residents, partners and local organisations to get in touch.

Energy & Environmental Initiatives

- The Energy Local Club and Community Energy initiatives can be accelerated to benefit residents, including skills training and retrofits. Collaboration with TfL on the Westway project could harness kinetic energy for community use. Further opportunities were identified in the realms of cleaner air and nature recovery - we were informed that Imperial College proposed to measure air quality and Thames Water is keen to fund SUDs projects for flood reduction.

Circular Economy & Health

- The transition towards a circular economy can be a job creation engine for the borough. The initiatives in place also offer a chance to improve residents' mental health and wellbeing.
- Rolling out food waste and upcycling and repair schemes.

Knowledge Sharing & Best Practices

- Opportunity for initiatives to offer a great knowledge-sharing through the FN2030 programme. Other Future Neighbourhoods, such as Somers Town (Camden) and 10 other boroughs, have also produced strategies that we could potentially learn from. There's an opportunity to discuss joint working based on commonalities and to implement best practices from similar projects within our own borough.

Challenges for delivery, integration, creating value, collaboration & partnership as we apply for Phase 3 funding

Financial & Resource/Capacity Constraints

The high cost of retrofits, particularly for leaseholders in multi-tenancy housing, could hinder project implementation. Resource allocation for training and upskilling local communities requires a significant commitment, including trainers, venues and funding. Moreover, creating opportunities to use these skills afterwards will be challenging but essential for ensuring long-term community benefits. Providing core costs for local organisations to continue their activity is key.

Collaboration

Effective strategic management, including area-wide planning with a local focus is necessary, yet challenging. Collaboration across Kensington and Chelsea Council and the ward is critical for the success of the projects. The coordination required to join up services within the Council, such as temporary accommodation, social housing, schools, parks, sports, health, and environment departments. Find new ways to engage with residents and bring creative methods to be used during consultations.

Environmental Challenges

Managing air quality, ensuring safe food growing conditions and implementing greening initiatives across all social housing. Communicating and delivering benefits to residents through community owned solar projects on social housing is challenging.

Communication & Engagement

Enhancing engagement and effectively showcasing project delivery to date were identified as significant challenges. It is crucial to use the right language and messaging to resonate with the community, and to maintain their motivation for long-term project support. Develop and create new organisations and skills within the local area that can support with genuine engagement and codesign. Consider inclusivity and accessibility when putting the information in the public domain. After the Grenfell tragedy, there is a consultation fatigue in Notting Dale – we need to find new and creative ways to engage with residents and methods to consult.

Sustainability & Longevity

Ensuring project sustainability, longevity, long term funding and legacy presents significant challenges but also opportunities. There is a risk of investing significant time and money into initiatives that may discontinue after a relatively short period (e.g., 18 months). Hence, forward planning and understanding the goals of various Council teams working within Notting Dale are paramount; plus building the capacity of local organisations.

Funding

Identify long-term funding streams – short funding programmes remain a challenge. The concept of cross-subsidising the delivery of green infrastructure projects with more investable works, such as retrofitting was discussed. This approach could help fund projects but implementing it might be complex. Additionally, ensuring technical data is provided in a meaningful, easy-to-understand manner is a challenge that needs to be addressed for benefits to be clearly understood by all stakeholders.

Meeting Local Needs

Ensuring that initiatives truthfully respond to people's needs is very important. Stakeholders voiced concerns about how far locals' and residents' needs are being considered and how opportunities are being identified to meet them.



How can the Future Neighbourhoods 2030 programme help achieve a Greener, Cleaner and Fairer eco-neighbourhood?

Sustained Change & Impact

- Stakeholders highlighted the potential of the retrofit and heat network initiatives in driving sustained change and having a long-standing impact.
- By focusing on priorities that deliver the most public good and the biggest impact, the FN programme can help create a greener and cleaner neighbourhood.
- The creation of a '15-minute city' will ensure residents have easier access to resources, making the neighbourhood fairer and more sustainable.

Support Community-Focused Enterprises

- The FN programme can support community-focused enterprises and volunteering. This could involve providing facilities and training to support local start-ups, creative businesses and repair shops.
- Utilising local academic resources can build a more knowledgeable and empowered community.
- Develop education campaigns on circular economy, climate change and develop comms and messages that are easier for residents to understand.

Improved Infrastructure & Accessibility

- Collaborating with TfL to upgrade Latimer Station and make it more accessible and through traffic management were identified as practical steps towards a fairer eco-neighbourhood.
- Also, creating a walkable zone with more walking and cycle routes and supporting the introduction and implementation of more cycle schemes. Install cycling infrastructure to make the neighbourhood greener and cleaner.
- Ensure accessibility and free active travel opportunities.
- Open a Zero Waste Shop in Notting Dale that is affordable.
- Develop schemes that are affordable and accessible for residents.

Addressing Inequality & Public Engagement

- Aligning the work of the Council to help address inequality and undertaking tangible projects to meet the needs of Notting Dale's residents are key to achieving a fairer eco-neighbourhood. Public education, encouragement and empowerment are seen as crucial factors in achieving these goals. The stakeholders proposed the idea of a learning centre that encourages people to live more sustainably, using climate adaptation initiatives to raise awareness of the local impacts of climate change.
- Language is very important when developing strategies.
- Climate justice – affordability/make it relevant and accessible for residents. Show the global issues but also how the local community has been impacted by climate change.

Collaboration & Preservation

- The ethos of collaborative working across the Council, including the leadership team, was emphasised as essential for success. Maintaining the principle of no removal of amenities, no net loss of trees, and no increase in housing density is crucial for ensuring a greener, cleaner, and fairer eco-neighbourhood. The community's commitment to data-driven, evidence-based approaches can significantly contribute to the programme's success.

How do we create legacy beyond the FN2030 programme?

Youth Involvement & Continuation of Initiatives



- Stakeholders highlighted the need to involve the younger generation to take over existing and new schemes or initiatives and to keep volunteering. A legacy can be ensured by planning, budgeting and creating opportunities for other types of long-term funding to continue delivering these initiatives. Key to this is fostering a sense of ownership among community members, which will ensure the initiatives' maintenance and ongoing support. Sharing data, expertise and collaborative opportunities with the community and academia can also contribute to a



Localisation & Empowerment

- Supporting organisations to integrate across different areas can create a sustainable legacy. Empowering youth to take ownership of projects is vital, as is maintaining political will to support these initiatives. Integrating sustainability education for children and adults into mainstream services and businesses across the Council can embed the programme's values long-term.
- A culture change at the Council, meaning that the leadership and majority party respect Notting Dale & North Kensington residents and elected representatives, is also critical for sustaining a legacy.



Safe and Sustainable Neighbourhood

- Creating a ward that is safe and can support active sustainable travel can leave a lasting legacy. Stakeholders emphasised the importance of publicising the programme's successes and learnings, and continuously talking about it to keep it on the agenda.



Inter-departmental Collaboration

- Using the FN2030 programme as a pilot scheme or demonstrator can encourage others to implement similar initiatives, creating a ripple effect.
- Ensuring effective communication and collaboration between Council departments and local partners, and integrating with other existing strategies is crucial for a sustained impact.
- Stakeholders also stressed the importance of planning for lifelong sustainability and long-term funding for the initiatives, including maintenance beyond the programme's duration.

Survey Annexes

SUPPORTED BY
MAYOR OF LONDON



THE ROYAL BOROUGH OF
KENSINGTON
AND CHELSEA

Annex (1)

Q1 Data count: How did Notting Dale residents rank the environmental issues impacting their neighbourhood the most?

What environmental issues do you think have impacted your neighbourhood the most?	Survey					
	No. of times ranked as:					
	1st	2nd	3rd	4th	5th	6th
Climate change	42	54	41	28	23	5
Air quality	67	65	35	19	7	10
Biodiversity	10	21	44	73	42	3
Fuel Poverty	32	27	36	41	50	7
Waste	31	23	33	29	68	9

Annex (2):

Q3: Insight on the Thematic Priorities of Notting Dale's Community

Thematic Priority	Surveys
Fabric First: Notting Dale Goes Net Zero (Retrofitting of homes, commercial and public buildings)	81
Powering Up for the People: Clean, Green and Local Energy (aims to provide energy that is locally generated from clean renewable energy sources, create heat networks and develop community owned renewable energy projects)	99
Creating a Cleaner and Healthier Notting Dale (Improve air quality and create zero emission zones, deliver active travel initiatives and make walking and cycling easier for residents)	125
Building a Notting Dale Nature Recovery Network (Climate adapted, resilient, and green neighbourhoods, create and enhance green spaces, increase biodiversity and access to nature, encourage local food growing, and reduce the risk of flooding)	95
Creating Green Jobs and Skills Through Circular Economy (Support a local green and circular economy, zero waste, create local green jobs, generate green skills and training opportunities, deliver repair and reuse workshops/hubs)	105



Annex (3)
Q2 Data: What Areas of Improvements Matter to the Residents of Notting Dale Most?

Improvement	Improvement - longer description	No. times selected In the survey	Total no. of times selected or located on a map:
Energy efficiency and retrofit	Energy efficiency improvements and retrofitting of homes, community centres, schools, public and commercial buildings	133	141
Local, clean and green energy	Generate local, clean and green energy through solar panel installations on buildings, community owned energy projects and heat networks	94	101
Energy and fuel advice	Provide energy and fuel debt advice and home energy visits to tackle fuel poverty and reduce energy bills for residents	117	123
Reduce air pollution	Reduce outdoor and indoor air pollution across the ward and residents' exposure	136	151
Active Travel	Improve active travel infrastructure and make cycling and walking more accessible and easier for local people	75	92
Reduce flooding	Reduce the risk of flooding by installing sustainable urban drainage systems and water harvesting measures	63	76
Green spaces	Create and improve local green spaces, plant more trees and increase biodiversity and access to nature	145	160
Spaces to grow food	Create new spaces to grow food locally and new community kitchen gardens	89	95
Circular Economy	Support a circular economy by delivering and promoting repairing, sharing, swapping and upcycling initiatives	63	65
Education, training & green jobs	Provide education and vocational training and create new local green jobs	83	88
Prevent food waste	Prevent food waste and encourage healthy and nutritious meals to tackle climate change and cost of living crisis	91	93



Stakeholders' workshop summary

A Stakeholder Workshop was organised on the 24th of May 2023 which brought together Council officers, representatives from community organisations and voluntary sector, faith groups, residents' associations and ward councillors. This section summarises the valuable insights gathered from stakeholders on the opportunities, challenges, and methods to achieve a greener, cleaner, and fairer eco neighbourhood. It also discusses the potential legacy of the FN2030 programme. More than 30 people attended in a hybrid format, online and in person.

- **The key questions explored during the workshop are:**
- **Key Initiatives Supporting the FN2030 Themes:** Participants expressed their support for all the five themes.
- **What is Missing:** Stakeholders emphasise the need for enhanced leaseholder support in the 'Fabric First' approach, including increased greening of community spaces. The 'Powering Up for the People' theme could benefit from informative PV campaigns, subsidies, and an increase in EV charging points. Stakeholders raised concerns about rental bike placements, air quality in schools, and sought binding commitments from the council to protect green spaces.
- **Opportunities:** Expanding the Lancaster West Heat Network and local repair shops, creating a borough-wide platform to connect residents, and training and workshops. The stakeholders identified areas for cycling lanes and suggested subsidising carpool schemes. Communicating projects through council magazines and working with schools, housing services, and voluntary sector organisations can further enhance community engagement. An accelerated Energy Local Club, leveraging Community Energy for skills training and retrofit, funding SUD projects are also promising opportunities.
- **Challenges:** Stakeholders raised concerns about the high cost of retrofits, traffic enforcement, and the strategic management needed for area-wide planning with a local focus. Collaboration is essential across Kensington and Chelsea Council, with hurdles to overcome, including in-house council decision-making politics. Other challenges included greening initiatives in social housing, managing air quality for safe food growing, and enhancing community engagement.
- **Achieving a Greener, Cleaner, and Fairer Eco-neighbourhood:** The FN programme can drive sustained change through retrofit and heat network initiatives, support for community-focused enterprises, and collaboration with TfL for infrastructure upgrades. The creation of a '15-minute city' would ensure residents have easier access to resources. Public education, encouragement, and empowerment, alongside collaborative working across the council, are also seen as crucial.
- **Creating Legacy Beyond the FN Programme:** Stakeholders proposed involving the youth to take over existing and new schemes and initiatives. It's also necessary to plan and budget to maintain and continue supporting these initiatives. Empowering youth to take ownership of projects is vital, as is maintaining political will to support these initiatives. Using the FN programme as a pilot scheme or demonstrator can encourage others to implement similar initiatives, creating a ripple effect.

