

Public Space Protection Order (PSPO)- Earl's Court

Analysis of stakeholder consultation

March 2024

Consultation and Participation Team
The Royal Borough of Kensington and Chelsea
consult@rbkc.gov.uk



THE ROYAL BOROUGH OF
KENSINGTON
AND CHELSEA

Introduction

Background

Following concerns raised by residents in Earl's Court ward regarding the overall safety of the area, the Council is proposing to introduce a Public Space Protection Order (PSPO). This measure is intended to address anti-social behaviours, enhance safety, and contribute to the overall improvement of the quality of life in Earl's Court ward.

Proposed PSPO Restrictions are:

1. Use of illegal drugs or psychoactive substances

- Prohibits preparing or using illegal drugs or psychoactive substances.
- Requires immediate cessation and surrender of substances or paraphernalia.
- Exemptions for lawful possession of psychoactive substances.

2. Littering

- Prohibits abandoning drug paraphernalia, bottles, cans, packets, etc., outside appropriate receptacles.

3. Street urination or defecation

- Prohibits urinating or defecating in a place other than a serviced public convenience.

4. Consumption of alcohol in a public place

- Prohibits consuming alcohol causing alarm, distress, or harassment.
- Requires immediate cessation and surrender of alcohol or containers.

5. Loitering and refusing to leave an area

- Prohibits loitering in a group causing intimidation, harassment, alarm, or distress.
- Mandates leaving an area upon request by an authorised officer.

6. Aggressive begging

- Prohibits aggressive begging for food, money, or other items.
- Includes intimidation, repeated requests, or false information.

7. Bicycles and scooters

- Prohibits riding on pavements within the protected area.
- Allows pushing and walking alongside bikes or scooters.



Introduction

Consultation methodology

An online survey was promoted via various avenues, including the Council's Consultation and Engagement Hub, social media posts, Nextdoor, e-newsletters and K&C Life. Additionally, a video featuring Cllr Sarah Addenbrooke was circulated on YouTube to encourage residents and stakeholders to participate in the consultation and share their views on the proposed PSPO. Paper surveys were distributed to Councillors to facilitate engagement with residents in sheltered housing, ensuring that individuals who are digitally excluded have the opportunity to share their views on the proposal. In total, 460 responded to the survey.

Appendix

An appendices document is also available on request, containing data tables and all comments made by respondents to the survey.

Acknowledgements

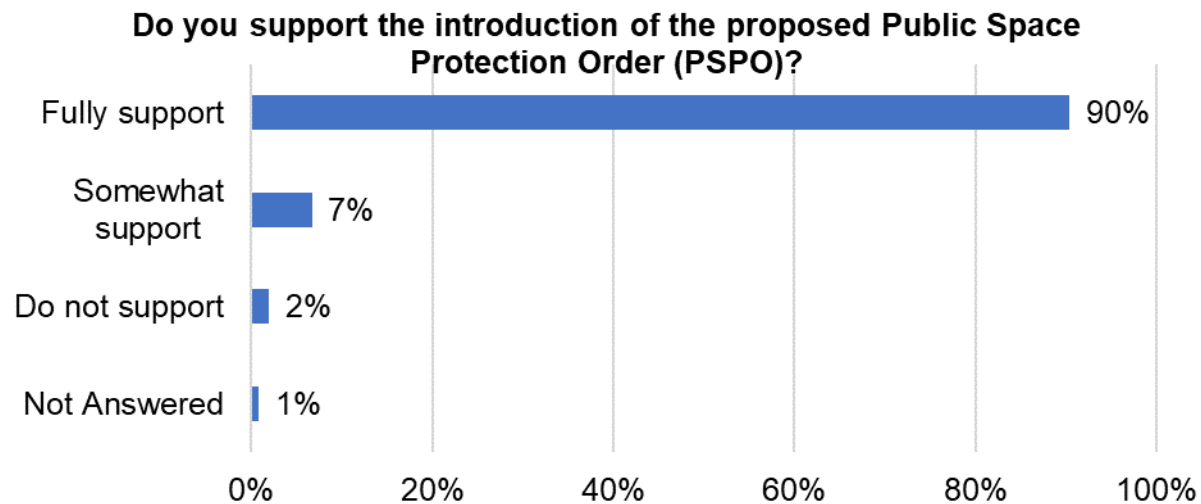
The Council would like to thank all residents and stakeholders who took the time to provide feedback on the proposed PSPO.



Support for the PSPO

Respondents were asked if they support the introduction of the proposed Public Space Protection Order (PSPO).

- The majority of respondents 'fully support' the introduction of the PSPO, 90 per cent of respondents.
- 'Somewhat support' was selected by seven per cent of respondents, and two per cent said they 'do not support' the introduction of the PSPO.



Base: All respondents (460)

Opposition to the introduction of the PSPO

Those that opposed the introduction of the PSPO were asked to explain why. There were 40 comments to this question.

Comments made have been themed and are summarised in the table below. Examples of comments can also be seen on the next page, with the full list of themes and comments found in the appendices.

Theme	Count
Support the PSPO introduction but unclear on enforcement instructions	18
Concerns over one or more of the proposed restrictions- cycling/scooters on pavements	8
Support the introduction of the PSPO	5
Opposed to some/all proposed restrictions as it overlooks the conditions and circumstances of vulnerable individuals	5
Concerns over one or more of the proposed restrictions- loitering	4
Safety concerns	4
Concerns over one or more of the proposed restrictions- alcohol consumption	3
Issues with West London Relief Route	1



Comments – Opposition to the introduction of the PSPO

“I support all the proposed except for use of non-electric scooters on pavements. I scoot with my children and use it as an alternative means of transport. As it is not electric, it is safest to use on the pavement. It is good for the environment as it means one less car on the road.”

Concerns over one or more of the proposed restrictions-cycling/scooters on pavements.

“I fully support the introduction of the proposed Public Spaces Protection Order (PSPO) but believe there are issues around enforcement and sufficient resources. A number of the proposed restrictions, such as the use of illegal drugs or psychoactive substances and street urination or defecation are already issuing the police and the Borough should be able to tackle, but unless we have the extra manpower, both from the police and the RBKC wardens, to react to these issues, I do not feel confident that the PSPO can have much of an impact.

Support the PSPO introduction but unclear on enforcement instructions



“Earl’s Court area is no longer a pleasant and safe environment to live.”

Safety concerns

“We are in desperate need of this and the enforcement of any new laws”

Support the introduction of the PSPO

“This is far too much of a draconian measure that will inevitably use by the police to harass and target members of the community who are marginalised, as we are all aware just last year the Casey Report found the Met police to be racist, amongst other things, they cannot be trusted to have even more powers to essentially harass people who already face injustice.”

Opposed to some/all proposed restrictions as it overlooks the conditions and circumstances of vulnerable individuals.

“Do these things actually work?”

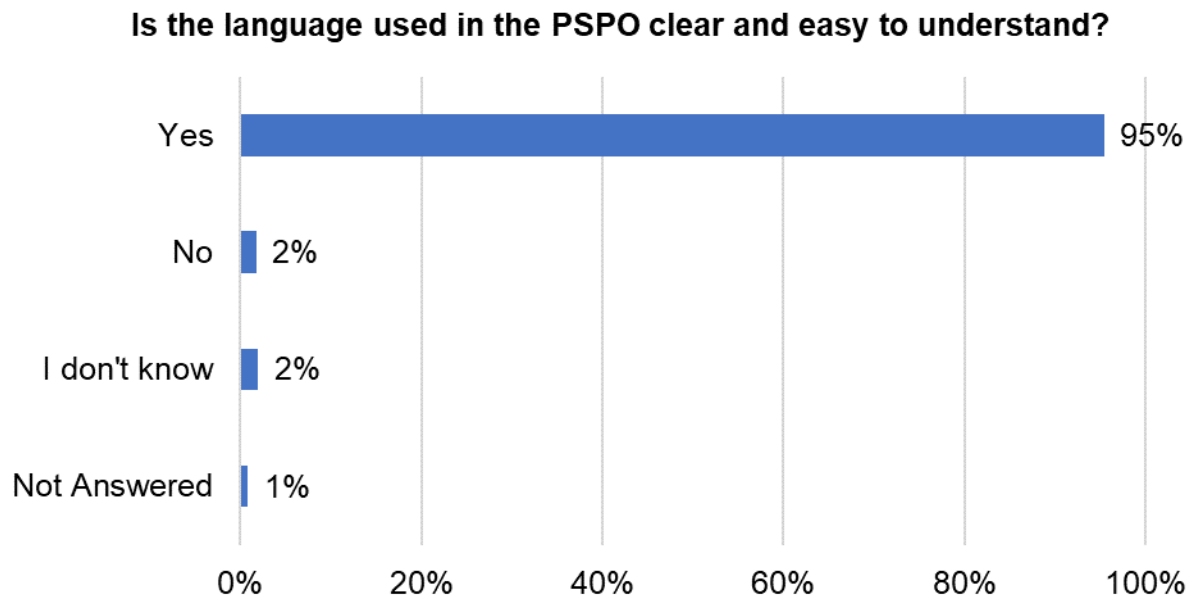
Support the PSPO introduction but unclear on enforcement instructions



Language

Respondents were asked if the language used in the PSPO is clear and easy to understand.

- The majority of respondents said that the language used in the PSPO is clear and easy to understand, 95 per cent of respondents.
- The answer 'no' was selected by two per cent of respondents, and two per cent selected 'I don't know' for their answer.



Base: All respondents (460)



THE ROYAL BOROUGH OF
KENSINGTON
AND CHELSEA

Language

Respondents who said that the language of the PSPO was not clear were asked to explain their answer. There were 14 comments to this question. Comments made have been themed and are summarised in the table below.

Examples of comments made can also be seen on the next page, with the full list of themes and comments found in the appendices.

Theme	Count
Regulations/Terms are not well defined	8
Other	4
Needs more clarifications on enforcement actions	3



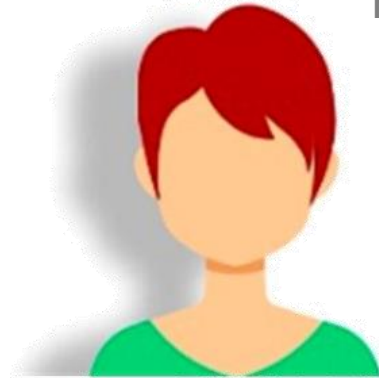
Comments – Language

“6 - definition of aggressive begging”

Regulations/Terms are not well defined

“N.B. As far as it goes, there is no mention of enforcement action or resources without which this is just too much.”

Needs more clarification on enforcement actions



“Why are you not prosecuting for possession of class a drugs.”

Needs more clarification on enforcement actions

“I don’t think drafting of point 1(c) (Exemptions for lawful possession of psychoactive substances) is very clear, maybe worth to clarify that this is prohibited as well”

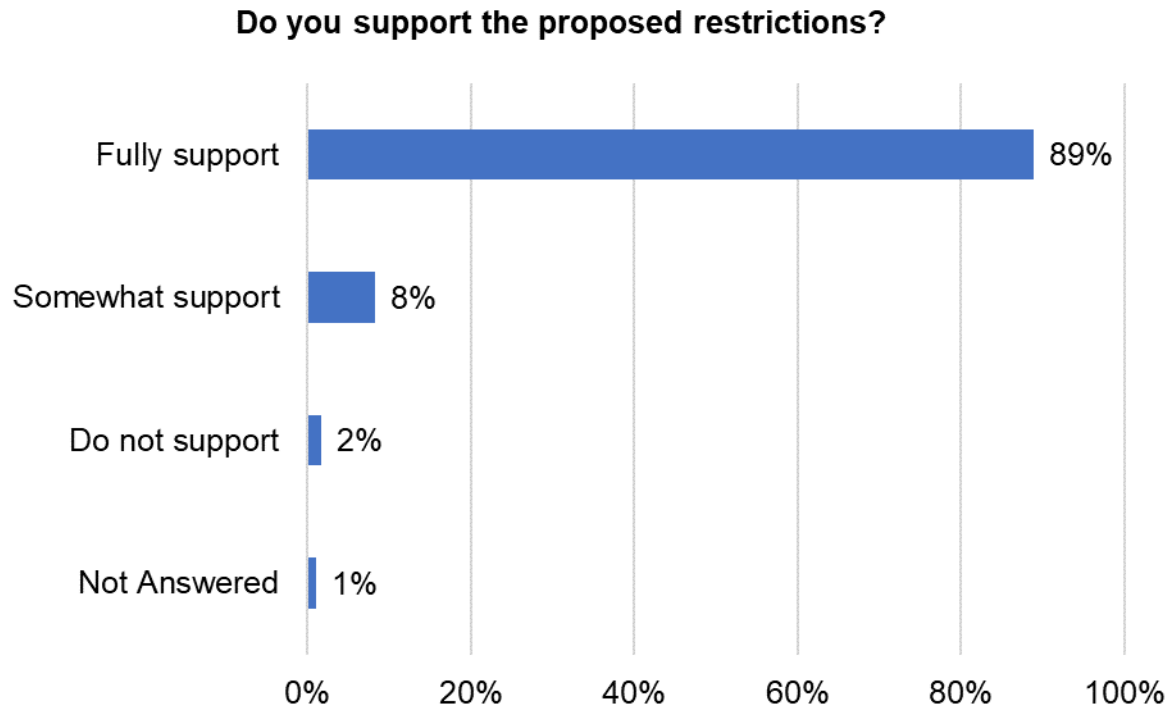
Regulations/Terms are not well defined



Support for the proposed restrictions

Respondents were asked if they supported the proposed restrictions included in the PSPO.

- Almost nine in ten said that they support the proposed restrictions, 89 per cent of respondents.
- 'Somewhat support' was selected by eight per cent of respondents and only two per cent said they 'do not support' the proposed restrictions.



Base: All respondents (460)

Requesting removal of specific restrictions

Respondents were asked if they would like to see one or more of these restrictions removed. There were 45 comments to this question. Comments made have been themed and are summarised in the table below.

Examples of comments can also be seen on the next page, with the full list of themes and comments found in the appendices.

Theme	Count
Remove the restrictions against the use of bikes/scooters	19
Remove the restrictions against the use of drugs/alcohol	8
Remove restrictions against loitering and refusing to leave an area	5
Against all restrictions	5
Keep all restrictions	4
Remove the restrictions against aggressive begging	2
Against most restrictions, but in support of prohibition of street urination or defecation	2
Other	1



Comments - Requesting removal of specific restrictions

“All.”

Against all restrictions

“Use of illegal drugs or psychoactive substances; Consumption of alcohol in a public place; Street urination”

Remove the restrictions against the use of drugs/alcohol



“Children should be allowed to bike and scoot on pavements”

Remove the restrictions against the use of bikes/scooters

“Each point mentioned has its own merit and I fully endorse them”

Keep all restrictions

“Cycling on pavements? If there is no cycle lane children should be allowed to use their bikes -slowly, walking pace- on the pavements”

Remove the restrictions against the use of bikes/scooters

“Drinking alcohol per se should not be an offence. However, drunken behaviour resulting in nuisance should be open to the penalties described.”

Remove the restrictions against the use of drugs/alcohol

“All, as the law is sufficient”

Against all restrictions



THE ROYAL BOROUGH OF
KENSINGTON
AND CHELSEA

Any additional restrictions

After querying respondents about their preferences for removing proposed restrictions, the survey then asked whether there were any additional restrictions they wished to suggest for us to include. There were 77 comments to this question. Comments made have been themed and are summarised in the table below.

Examples of comments can also be seen on the next page, with the full list of themes and comments found in the appendices.

Theme	Count
Stricter enforcement for proposed restrictions.	15
Restrictions on the use of bikes/e-bikes and motorcycles	12
Rubbish/littering/dumping restrictions	10
Measures against noise issues	8
Pavement/streets improvements	7
Measures against muggings/burglaries/shoplifting	6
Prevent homelessness	5
Restrictions against irresponsible driving	5
Other	4
Restrictions against graffiti and vandalism	4
Restrictions to control dogs/pets	3
Drinking alcohol should be prohibited	1



Comments- Any additional restrictions

“Stopping gangs from mugging young people on way home from school. It is awful right now. My son does not feel safe on the streets.”

Measures against muggings/ burglaries/ shoplifting

“Loud yelling, screaming and arguing in public spaces”

Measures against noise issues

“Very important to ensure that the one way system is abided by. This is continually ignored by cyclists e.g. entering into Eardley Crescent from the Warwick Rd junction as only one example not only creating hazards for oncoming traffic but also for pedestrians crossing the road.”

Pavement/ streets improvements



“Address muggings”

Measures against muggings/ burglaries/ shoplifting

*“(1) To spit on the pavement on the streets.
(2) To leave rubbish the wrong day on the streets.”*

Pavement/ streets improvements

“Sleeping on pavement and in front of doorways.”

Prevent homelessness

“Aggressive and loud driving on Earl’s court, actual implementation of the speed limit.”

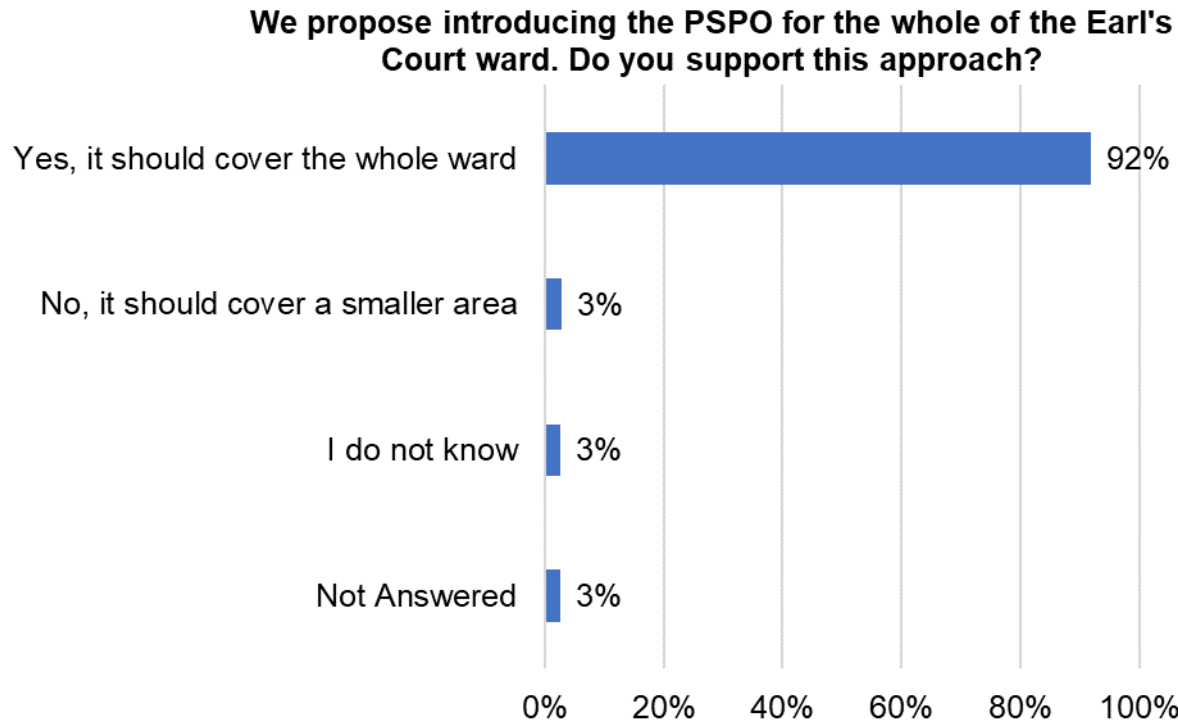
Restrictions against irresponsible driving



Area covered by the PSPO

Respondents were asked if they support the proposal of introducing the PSPO for the whole of the Earl's Court ward.

- The majority agreed that the PSPO should cover the whole of the Earl's Court ward, 92 per cent of respondents.
- Three per cent said that the PSPO should cover a smaller area, and three per cent selected 'I do not know' for their answer.



The PSPO should cover a smaller area

Respondents were asked if they thought that the proposed PSPO should cover a smaller area. There were 23 comments to this question.

Comments made have been themed and are summarised in the table below. Examples of comments can also be seen on the next page, with the full list of themes and comments found in the appendices.

Theme	Count
Should cover area around Earl's Court station	12
Against the implementation of the PSPO	8
It should cover a wider area	2
Cover smaller area for efficient enforcement	1



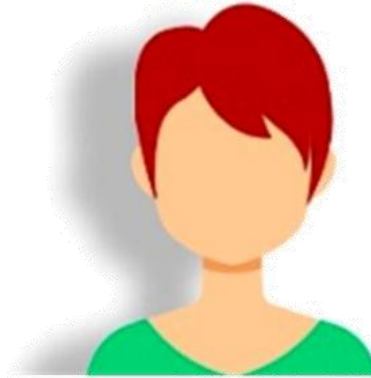
Comments -The PSPO should cover a smaller area

“I don’t agree it should be in place at all.”

Against the implementation of the PSPO

“Should cover the area around Earl’s Court tube and immediately surrounding streets. Most of the ward has few if any of these problems.”

Should cover area around Earl’s Court station



“It should not cover any area—the PSPO should be rejected.”

Against the implementation of the PSPO

“The area immediately around the tube station from both sides”

Should cover area around Earl’s Court station

“Enforcement should focus on the area outside the Earl’s Court Road tube station entrance and on the Earl’s Court Road ends of Hogarth Road, Trebovir Road, Earl’s Court Gardens, Kenway Road and Nevern Place.”

Should cover area around Earl’s Court station

“It depends on resources to enforce the restrictions. It is better to enforce over a smaller area than fail over a larger area . Efficient enforcement will benefit the whole area. It should spread out from the station.”

Cover smaller area for efficient enforcement



Other comments about the PSPO

At the end of the survey questions, respondents were given the opportunity to make any other comments about the PSPO. There were 163 comments to this question. Comments made have been themed and themes with six or more comments are summarised in the table below.

Examples of comments can also be seen on the next page, with the full list of themes and comments found in the appendices.

Theme	Count
Supporting the implementation of the PSPO	50
Require robust enforcement for proposed restrictions	30
Safety concerns	17
Unclear on how to enforce the proposed restrictions	16
Cleanliness concerns in the area	15
Enhanced measures to prevent drug use/drug dealing.	15
The PSPO should cover a wider area	14
Street/pavement improvements	8
Other	6



Other comments about the PSPO

“It will only work with increased police numbers, regular patrols etc.”

Require robust enforcement for proposed restrictions

“Consultation on this has been going on for far too long. The problems involved have been ramping up for several years and really need action urgently.”

Require robust enforcement for proposed restrictions



“Littering goes beyond cigarette butts, cans or drugs. People do not hesitate to fly tip, throw their trash anywhere.”

Cleanliness concerns in the area

“Good idea. Fully support..... hope the police will resource it properly.”

Supporting the implementation of the PSPO

“Please stop drug dealers on my doorstep.”

Enhanced measures to prevent drug use/drug dealing.

“It should cover all borough areas”

The PSPO should cover a wider area

“How is all this to be enforced? Is there a budget for more patrolling?”

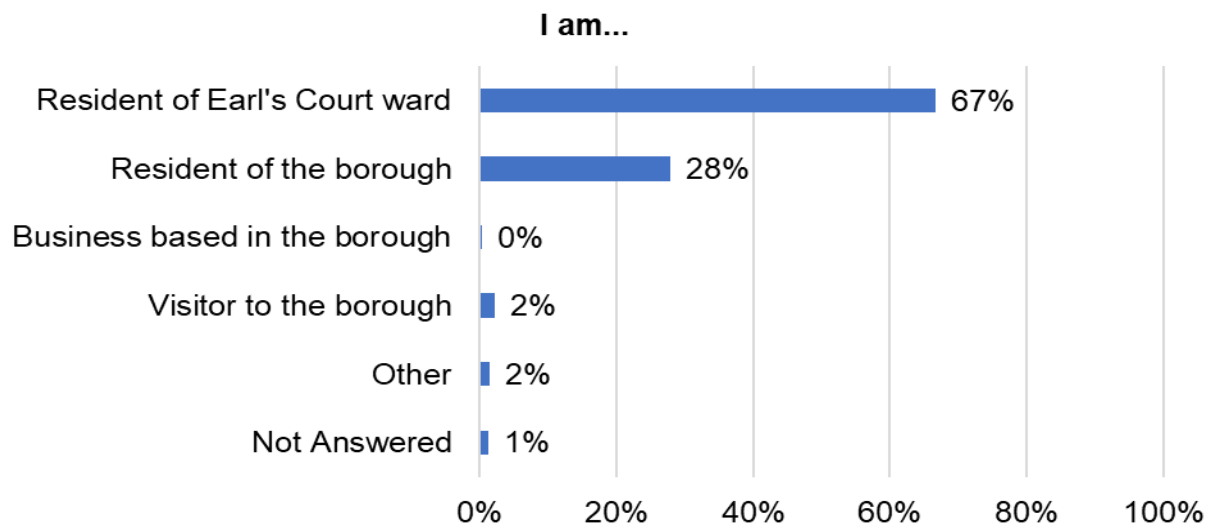
Unclear on how to enforce the proposed restrictions



Profile of respondents

Respondents were asked a series of questions about themselves, to understand who had responded to the consultation.

The graph below shows the answers selected by respondents when they were asked in what capacity they were responding. Respondents who selected 'other' were asked to specify their capacity. Among the 15 comments received, common types of 'other' responders included those who stated they "live nearby" or identified themselves as "property owners".

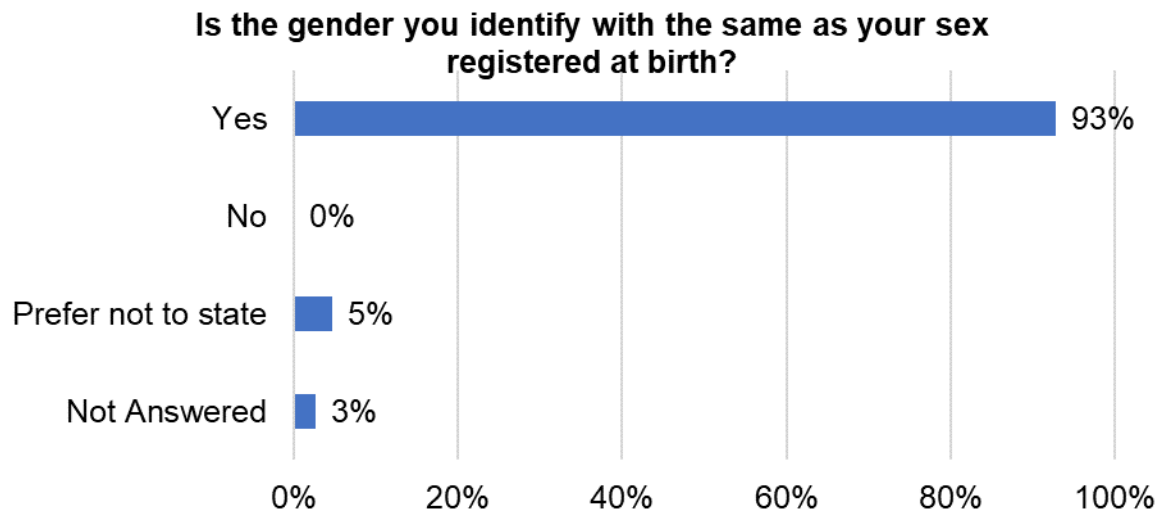
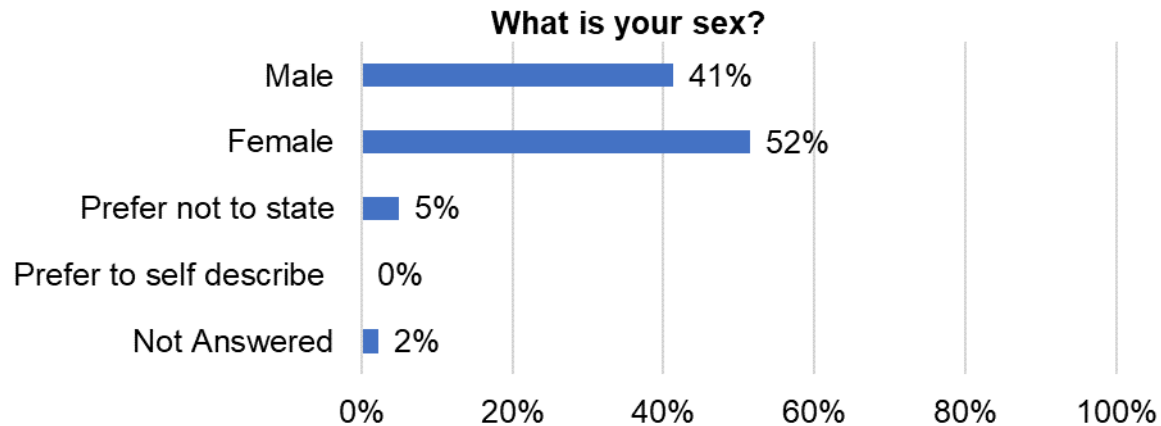


Base: All respondents (460)



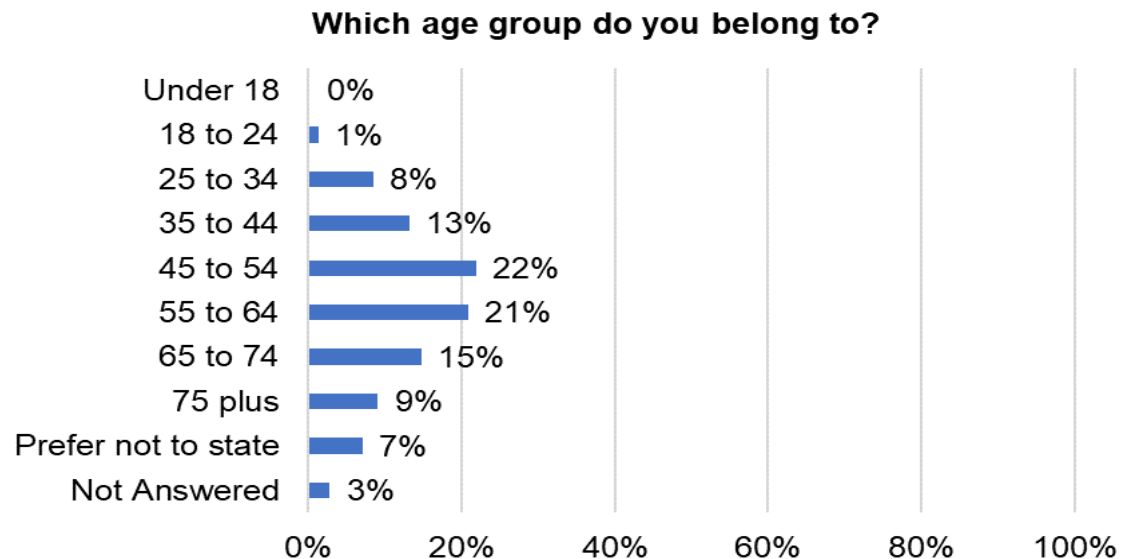
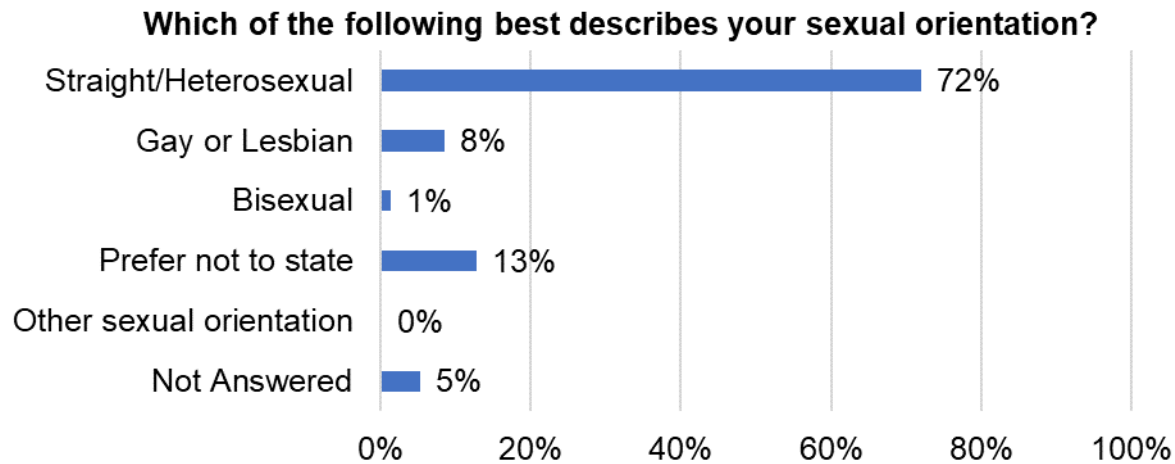
THE ROYAL BOROUGH OF
KENSINGTON
AND CHELSEA

Profile of respondents



Base: All respondents (460)

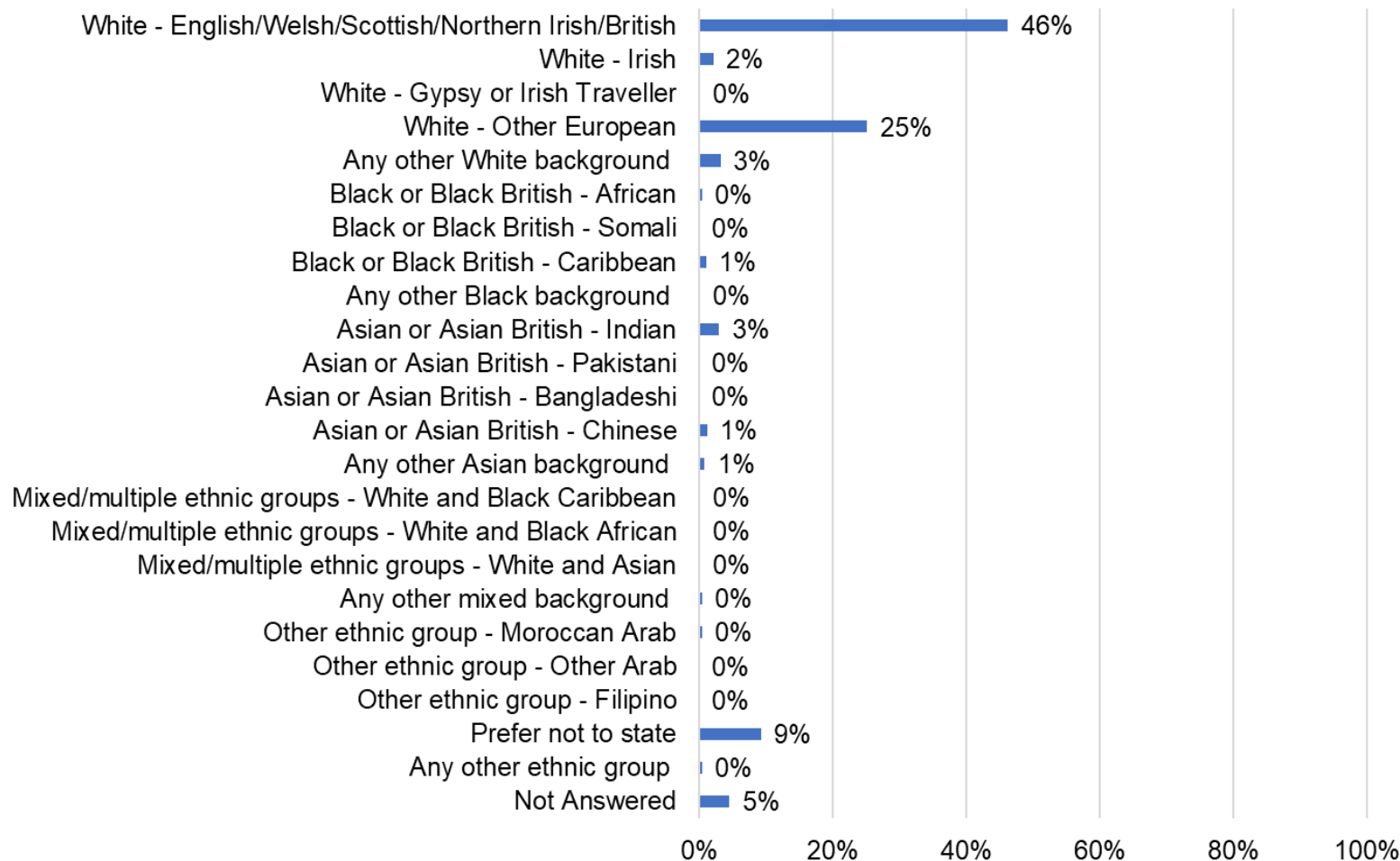
Profile of respondents



Base: All respondents (460)

Profile of respondents

How do you describe your ethnic origin?

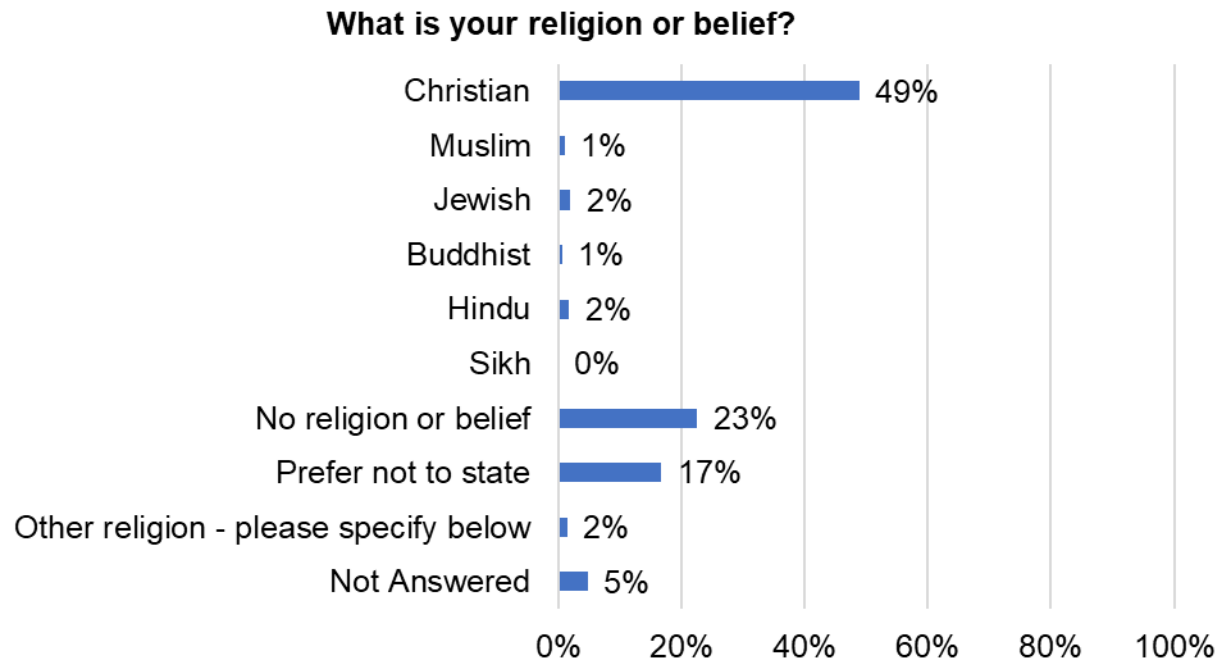


Base: All respondents (460)



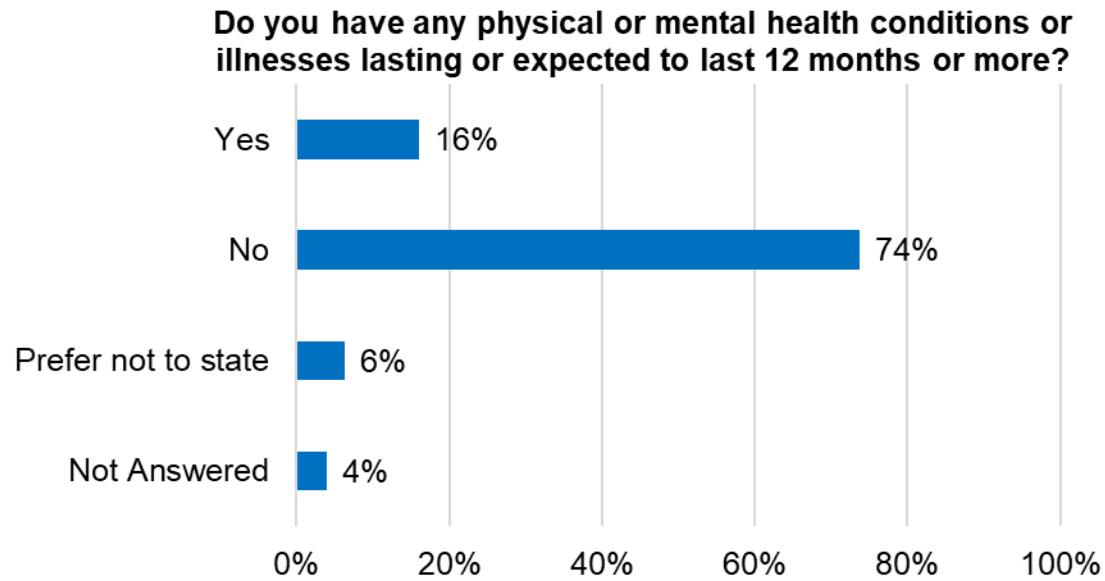
THE ROYAL BOROUGH OF
KENSINGTON
AND CHELSEA

Profile of respondents



Base: All respondents (460)

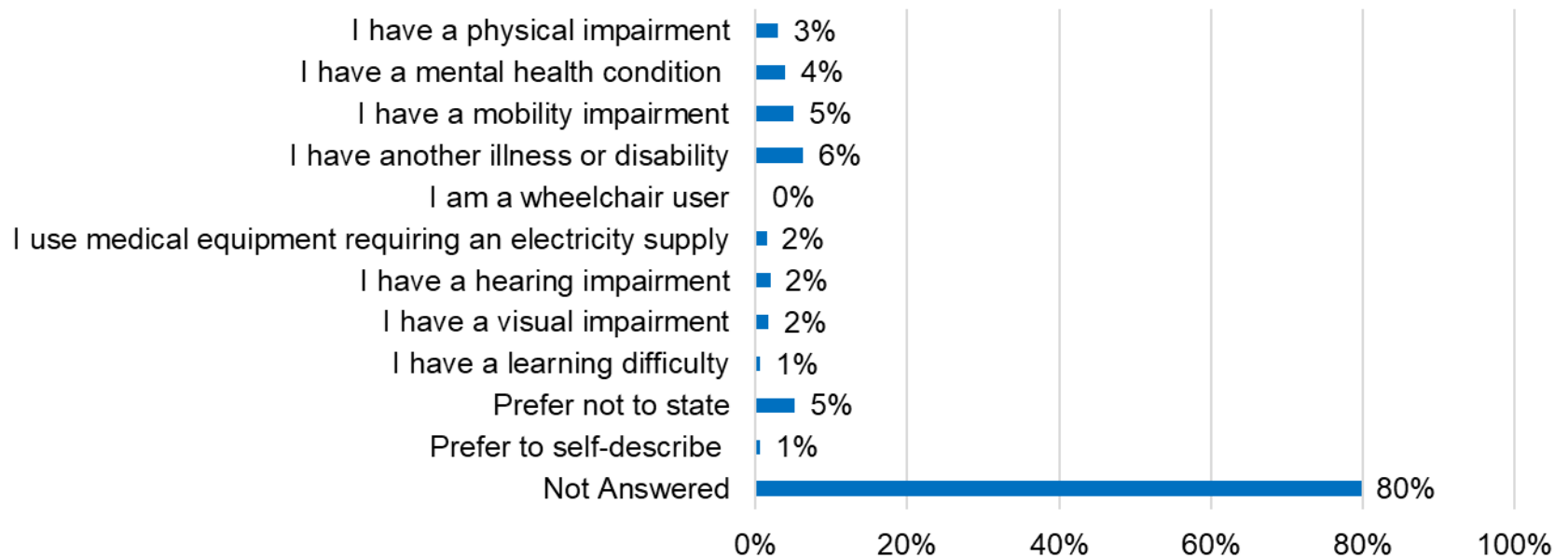
Profile of respondents



Base: All respondents (460)

Profile of respondents

If yes, what is the nature of your physical or mental health condition or illness? (Select all that apply)



Base: All respondents (460)



THE ROYAL BOROUGH OF
KENSINGTON
AND CHELSEA