

WESTERN RIVERSIDE WASTE AUTHORITY

Joint Resources and Waste Strategy

2025-2040





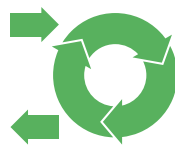
We are the Western Riverside Partners

We are local authorities that work together to reuse, collect, sort, recycle, treat and dispose of waste in your area. Our Partners include the London Borough of Hammersmith & Fulham, the London Borough of Lambeth, the Royal Borough of Kensington and Chelsea, the London Borough of Wandsworth and Western Riverside Waste Authority.

WE WANT TO REDUCE OUR ENVIRONMENTAL FOOTPRINT BY:



Producing less waste.



Moving to a Circular Economy by keeping stuff in use for as long as possible through repairing, sharing and reuse.



Making it easier for our residents and businesses to recycle more.

This is why we're developing a plan – a Joint Resources and Waste Strategy – which will start in 2025 and last until 2040.

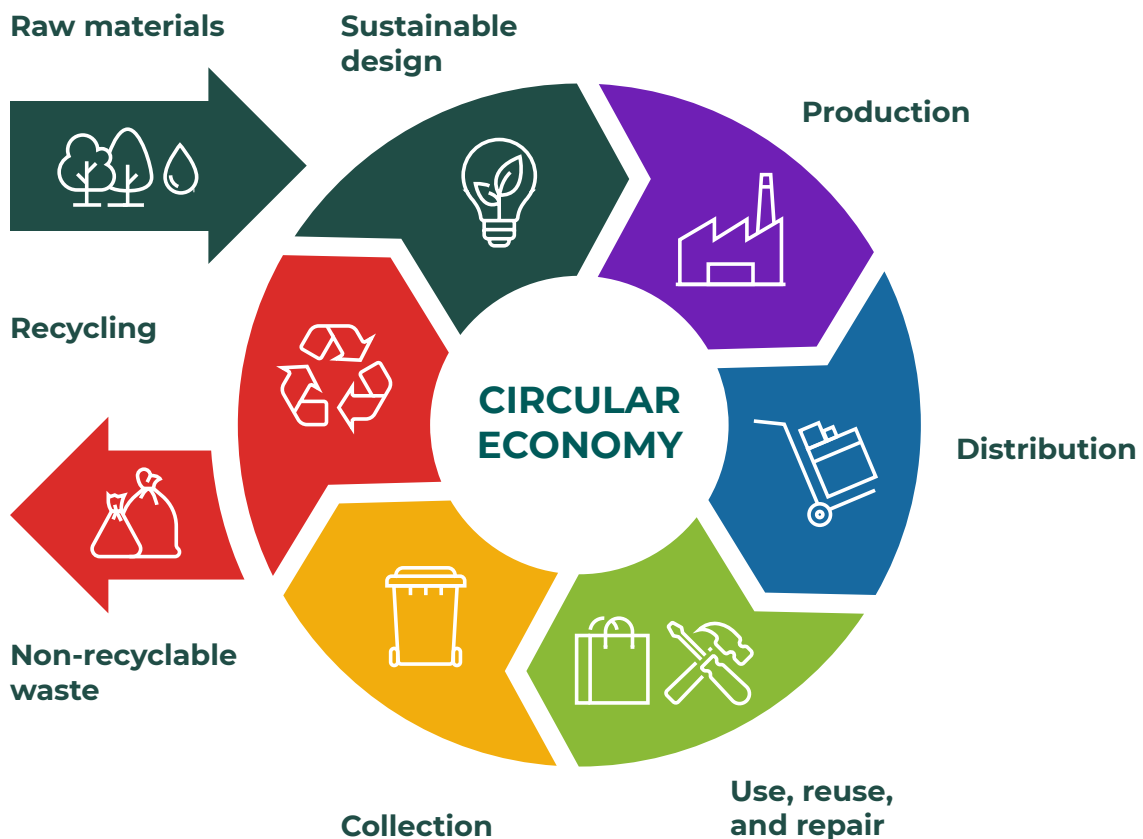
Our Vision

“ The Western Riverside partners will work together with our residents and businesses to prioritise waste prevention, reduce our carbon emissions and environmental impacts, and provide customer focused waste and recycling services that maximise value from the materials we manage. ”



WHAT IS A CIRCULAR ECONOMY?

The goal of a Circular Economy is to minimise waste and promote sustainable use of natural resources. This involves smarter product design, repair, reuse and recycling to keep materials in use for longer.



So where are we now?

We're reusing and recycling a lot of materials – but we need to do better.

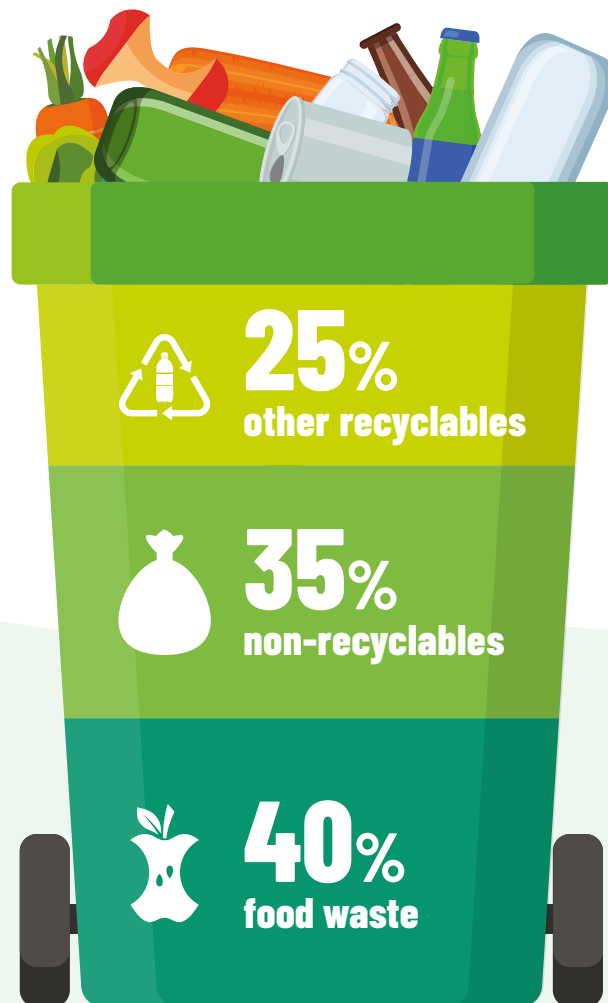
Most of what we throw away can be avoided, reused, recycled or composted. About 40% is food waste and 25% is other kinds of waste that could be recycled.

Once collected, your recycling is separated into different materials and then sent to specialist organisations to be turned back into the raw materials needed to make new products.

Separately collected food and garden waste is composted or turned into heat, energy and fertiliser.

Larger items that are in good condition can be taken to our Household Waste and Recycling Centre at Smugglers Way, Wandsworth, where our charity partner ReWork repairs and refurbishes them and gives them a second life. Items that cannot be given a second life are sent for recycling.

Anything that can't be recycled is transported down the River Thames by barge (helping to reduce traffic and air pollution on our roads) and transformed into energy at the Belvedere Energy from Waste facility.



Currently, across the area we recycle almost a quarter (24.3%) of our waste, but need to do more. We have some practical challenges which can make recycling difficult. Three quarters of our homes are flats, where there's often not a lot of space to store our waste and recycling. Land in the area is in high demand and short supply so we don't have a lot of additional space for reuse, recycling or waste sites. We also have a lot of people moving in to the area that need to be educated on what can be reused and recycled.



Where do we need to get to?

National Government and the Greater London Authority have laws, policies and targets we need to follow and plan for. These focus on reducing waste, reusing items, collecting more materials for recycling (including food waste and plastic film), encouraging businesses to recycle, making packaging more recyclable and providing a deposit return scheme for bottles and cans.



TARGETS WE NEED TO AIM FOR INCLUDE:



Halving waste that is not reused, recycled or composted by 2042 – UK Government



Recycling half of the waste collected from households and businesses by 2030 – Greater London Authority



Recycling 65% Local Authority Collected Waste by 2035
– UK Government

The Western Riverside Partners will need to contribute towards these collective targets by reducing, reusing and recycling our waste as much as we can.

How do we succeed?

We need to work together – residents, businesses and the Western Riverside Partners. To do this we've developed our Joint Resources and Waste Strategy. In it, we've put together four action plans that will help us achieve our vision:

TRANSITIONING TO A CIRCULAR ECONOMY

We want to be smarter about using things again and again, repairing and refurbishing them, and recycling more, so we waste less and save more.



Actions include:

- Promote activities that prevent waste, reuse materials and increase recycling.
- Support the Mayor of London's goal to cut food waste by 50% by 2030 and start food waste collections for all homes (and businesses).
- Expand recycling collections to include more items like textiles, batteries, plastic film and a wider range of packaging.
- Work towards a target of recycling 35% of LACW by 2030 and 50% by 2040.
- Work towards a target of recycling 30% Household Waste by 2030 and 45% by 2040.
- Halving our rubbish (waste that can't be recycled) by 2042 (reducing our municipal waste to 333 kg/capita per year).

ACHIEVING NET ZERO

We're aiming to do our part for the climate by being efficient, reducing our carbon emissions and not wasting resources.



Actions include:

- Understand our emissions and reduce them by using cleaner fuels and capturing carbon.
- Keep converting unavoidable waste to energy and continue to send no waste to landfill.
- Recycle waste by-products, like turning ash into building materials.

COLLABORATING AND COMMUNICATING TO AMPLIFY OUR IMPACT

We believe in working with everyone involved to come up with better ways to reduce, reuse, and recycle.



Actions include:

- Work with communities, businesses, local authorities and charities to increase our impact.
- Keep track of how satisfied people are with our services.
- Provide education on reducing waste and recycling more.
- Provide benefits to our communities through increasing skills and creating job opportunities.

DELIVERING BEST VALUE AND PREPARING FOR THE FUTURE

We're focusing on giving you the best service for your money while getting ready for new challenges that may come up.



Actions include:

- Regularly monitor and report on our progress.
- Ensure contracts offer good value and meet future needs.
- Show the economic benefits of reducing waste and reusing materials.

We'll review our work regularly to make sure we're progressing towards our vision and targets. We'll also report every year and publish any new actions we're adding to the plans.

Working together we can achieve our vision.



Be Part of the Change

Tell us what you think of our strategy and action plans.

Please join in our consultation from **September 2nd to October 14th 2024** through online surveys, meetings, or by contacting us directly.

If you would like to request a hard copy of this document please contact the Western Riverside Waste Authority on:

Tel: 0208 871 2788

Email: strategies@wrwa.gov.uk

If you'd like more detailed information please read our draft Strategy document: www.wrwa.gov.uk/strategy

Your feedback will help us improve our Strategy and better serve our community.

